

rolla

7065.01 - 7065.20



Kollektion

upholstery

Beschreibung

**dreidimensionaler, cooler, grafischer
Möbelstoff**

Zusammensetzung

**88% recycled polyester FR / 12% polyester
FR**

Breite

± 140 cm, ± 55 inches

Gewicht

± 775 gr/m¹, ± 25 oz/yd¹ fabrics

Brandschutzklasse

EN 1021/ 1-2

BS 5852, crib 5

NF P 92 / 503 - 507, M1

DIN 4102, B1

UNI 9175, classe 1.IM

Cal TB 117

NFPA 260, class 1

IMO 2010 FTP part 8

Abrieb

ISO 12947-2

50.000 rubs martindale

ASTM D4157

100.000 double rubs wyzenbeek

Pillingbildung

ISO 12945-2

4 (skala 1-5)

ASTM D3511

3 (skala 1-5)

Reibechtheit

ISO 105-X12

nass 4-5 / trocken 4-5 (skala 1-5)

AATCC 8

nass 5 / trocken 4.5 (skala 1-5)

Lichtechtheit

ISO 105-B02

6 (skala 1-8)

AATCC 16.3: 40 hours

4 (skala 1-5)

Nahtschiebewiderstand

ISO 13936 - 2

Kette 2.3 mm / Schuss 2 mm

ASTM D4034

Kette 102 lbs / Schuss 83 lbs

Reißfestigkeit

ISO 13934-1

warp 1120 N / weft 2500 N

ASTM D5034

warp 239 lbs / weft 560 lbs

Pflege



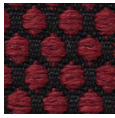
Schrumpfwerte: Kette -2.8% / Schuss -2.6%



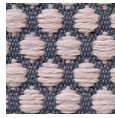
STANDARD
100
S07-0023
Hohenstein HTTI

rolla

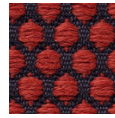
7065.01 - 7065.20



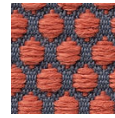
7065.01



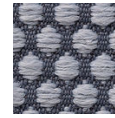
7065.02



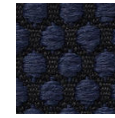
7065.03



7065.04



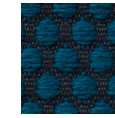
7065.05



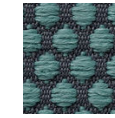
7065.06



7065.07



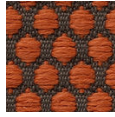
7065.08



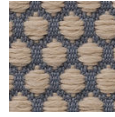
7065.09



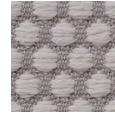
7065.10



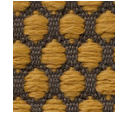
7065.11



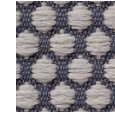
7065.12



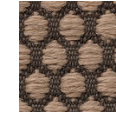
7065.13



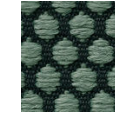
7065.14



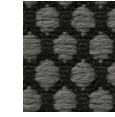
7065.15



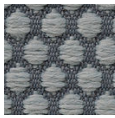
7065.16



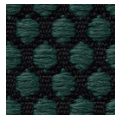
7065.17



7065.18



7065.19



7065.20