

# rolla

7065.01 - 7065.20



binder

**upholstery**

opis

**trójwymiarowa i wytrzymała tkanina meblowa w graficzne wzory**

skład

**88% recycled polyester FR / 12% polyester FR**

szerokość

**± 140 cm, ± 55 inches**

gramatura

**± 775 gr/m<sup>1</sup>, ± 25 oz/yd<sup>1</sup> fabrics**

odporność ogniowa

**EN 1021/ 1-2**

**BS 5852, crib 5**

**NF P 92 / 503 - 507, M1**

**DIN 4102, B1**

**UNI 9175, classe 1.IM**

**Cal TB 117**

**NFPA 260, class 1**

**IMO 2010 FTP part 8**

odporność na ścieranie

**ISO 12947-2**

50.000 rubs martindale

**ASTM D4157**

100.000 double rubs wyzenbeek

odporność na wyrywanie włókien

**ISO 12945-2**

4 (skala 1-5)

**ASTM D3511**

3 (skala 1-5)

odporność na wycieranie

**ISO 105-X12**

mokre 4-5 / suche 4-5 (skala 1-5)

**AATCC 8**

mokre 5 / suche 4.5 (skala 1-5)

odporność na działanie światła

**ISO 105-B02**

6 (skala 1-8)

**AATCC 16.3: 40 hours**

4 (skala 1-5)

wytrzymałość szwów

**ISO 13936 - 2**

łańcuch 2.3 mm / wątek 2 mm

**ASTM D4034**

łańcuch 102 lbs / wątek 83 lbs

odporność na tarcie

**ISO 13934-1**

warp 1120 N / weft 2500 N

**ASTM D5034**

warp 239 lbs / weft 560 lbs

codzienna dbałość o produkt



**kurczliwość: łańcuch -2.8% / wątek -2.6%**



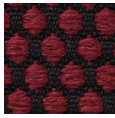
STANDARD  
100

S07-0023  
Hohenstein HTTI

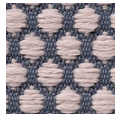
# rolla

7065.01 - 7065.20

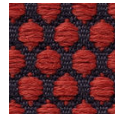
---



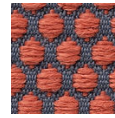
7065.01



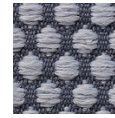
7065.02



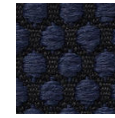
7065.03



7065.04



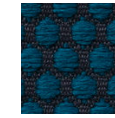
7065.05



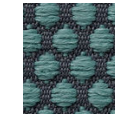
7065.06



7065.07



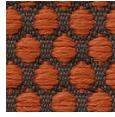
7065.08



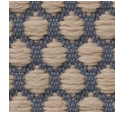
7065.09



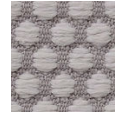
7065.10



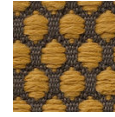
7065.11



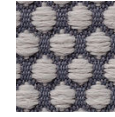
7065.12



7065.13



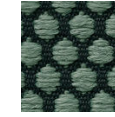
7065.14



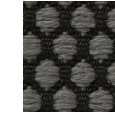
7065.15



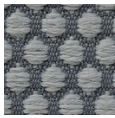
7065.16



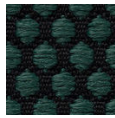
7065.17



7065.18



7065.19



7065.20