

# rolla

7065.01 - 7065.20



## binder

upholstery

## 描述

面料系列，带有醒目的3D图案

## 组成

88% recycled polyester FR / 12% polyester FR

## 宽度

± 140 cm, ± 55 inches

## 重量

± 775 gr/m<sup>2</sup>, ± 25 oz/yd<sup>2</sup> fabrics

## 阻燃

EN 1021/ 1—2

BS 5852, crib 5

NF P 92 / 503 — 507, M1

DIN 4102, B1

UNI 9175, classe 1.M

Cal TB 117

NFPA 260, class 1

IMO 2010 FTP part 8

## 耐磨性

ISO 12947—2

50.000 rubs martindale

ASTM D4157

100.000 double rubs wyzenbeek

## 起毛

ISO 12945—2

4 (由 1—5)

ASTM D3511

3 (由 1—5)

## 耐擦拭

ISO 105—X12

湿 4—5 / 干 4—5 (由 1—5)

AATCC 8

湿 5 / 干 4.5 (由 1—5)

## 耐褪色

ISO 105—B02

6 (由 1—8)

AATCC 16.3: 40 hours

4 (由 1—5)

## 耐滑缝

ISO 13936 — 2

纵向收缩比 2.3 mm / 横向收缩比 2 mm

ASTM D4034

纵向收缩比 102 lbs / 横向收缩比 83 lbs

## 屈伸强度

ISO 13934-1

warp 1120 N / weft 2500 N

ASTM D5034

warp 239 lbs / weft 560 lbs



收缩□ : 纵向收缩比 -2.8% / 横向收缩比 -2.6%



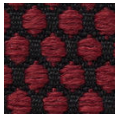
STANDARD  
100

S07-0023  
Hohenstein HTTI

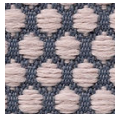
# rolla

7065.01 - 7065.20

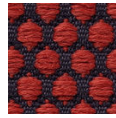
---



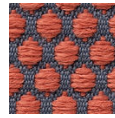
7065.01



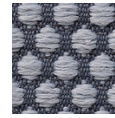
7065.02



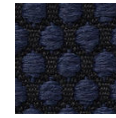
7065.03



7065.04



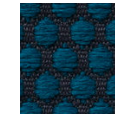
7065.05



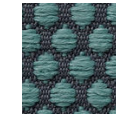
7065.06



7065.07



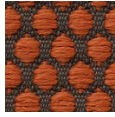
7065.08



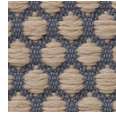
7065.09



7065.10



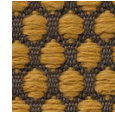
7065.11



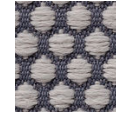
7065.12



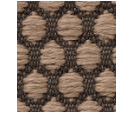
7065.13



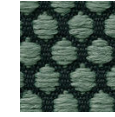
7065.14



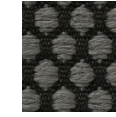
7065.15



7065.16



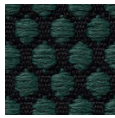
7065.17



7065.18



7065.19



7065.20