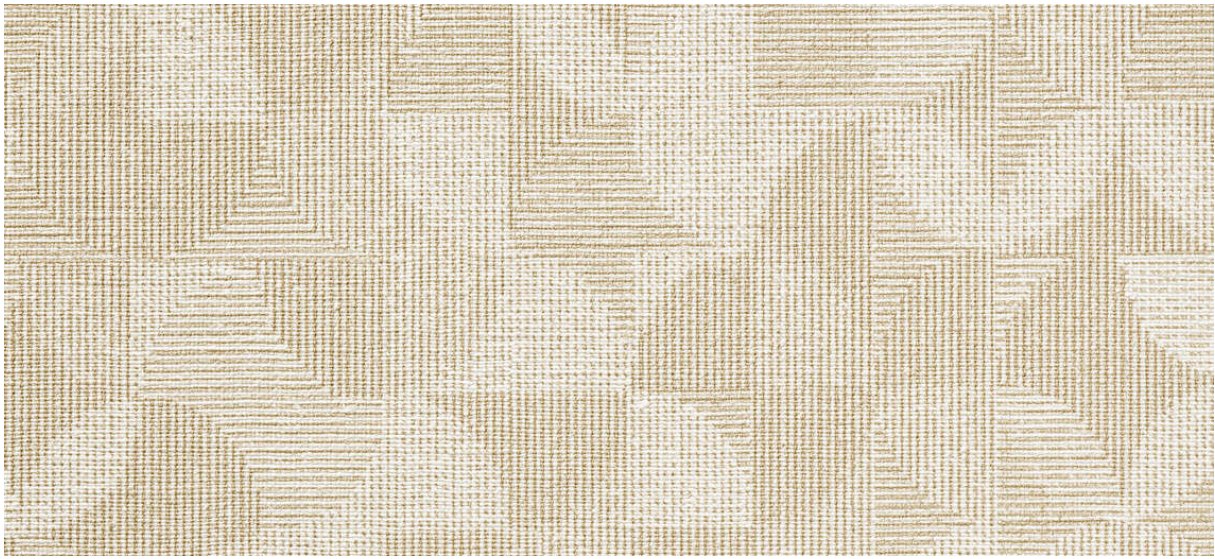


arches

7066.01 - 7066.17



binder

**upholstery
vinyl**

descrizione

struttura tessile a pattern

composizione

spalmatura vinilica spugnosa, tessuto in cotone e poliestere

altezza

± 137-140 cm, ± 54-55 inches

peso

**tessuto: ± 110 gr/m², ± 5 oz/yd¹
spalmato: ± 690 gr/m², ± 31 oz/yd¹**

spessore

1.1 mm, 0.04 inches

resistenza al fuoco

**EN 1021/1-2
BS 5852, crib 5
NF P 92/503 - 507, M2
NF D60-013 (AM 18)
DIN 4102, B2
UNI 9175, classe 1 IM
Cal TB 117
NFPA 260, class 1
IMO 2010 FTP part 8**

resistenza all'abrasione

ISO 12947-2
> 300.000 rubs martindale
ASTM D4157
100.000 double rubs wyzenbeek

solidità allo sfregamento

ISO 105-X12
wet 5 / dry 5 (scale 1-5)
AATCC 8
wet 5 / dry 5 (scale 1-5)

resistenza alla luce

ISO 105-B02
8 (scale 1-8)
ASTM D4329: 150 hours
4 (scale 1-5)

resistenza a sangue, urina, sudore e sebo cutaneo

EN 12720
5 (scale 1-5)

resistenza alla trazione

ISO 1421
length 470 N / width 313 N
ASTM D2261
length 7 lbs / width 9 lbs

resistenza alla flessione

ISO 7854
400.000 cycles

aderenza del rivestimento

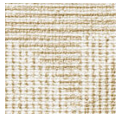
ASTM D751
length 8 lbf / width 5 lbf



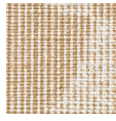
vinyl 
COMMITTED TO
SUSTAINABLE DEVELOPMENT

arches

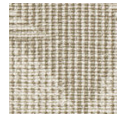
7066.01 - 7066.17



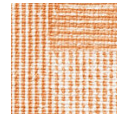
7066.01



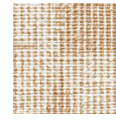
7066.02



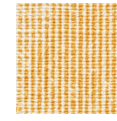
7066.03



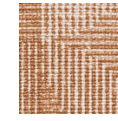
7066.04



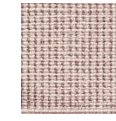
7066.05



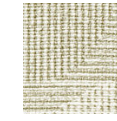
7066.06



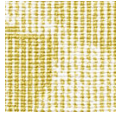
7066.07



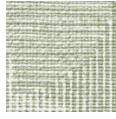
7066.08



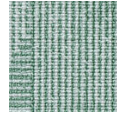
7066.09



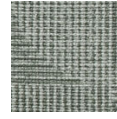
7066.10



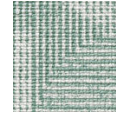
7066.11



7066.12



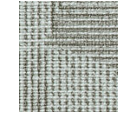
7066.13



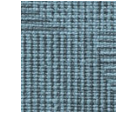
7066.14



7066.15



7066.16



7066.17