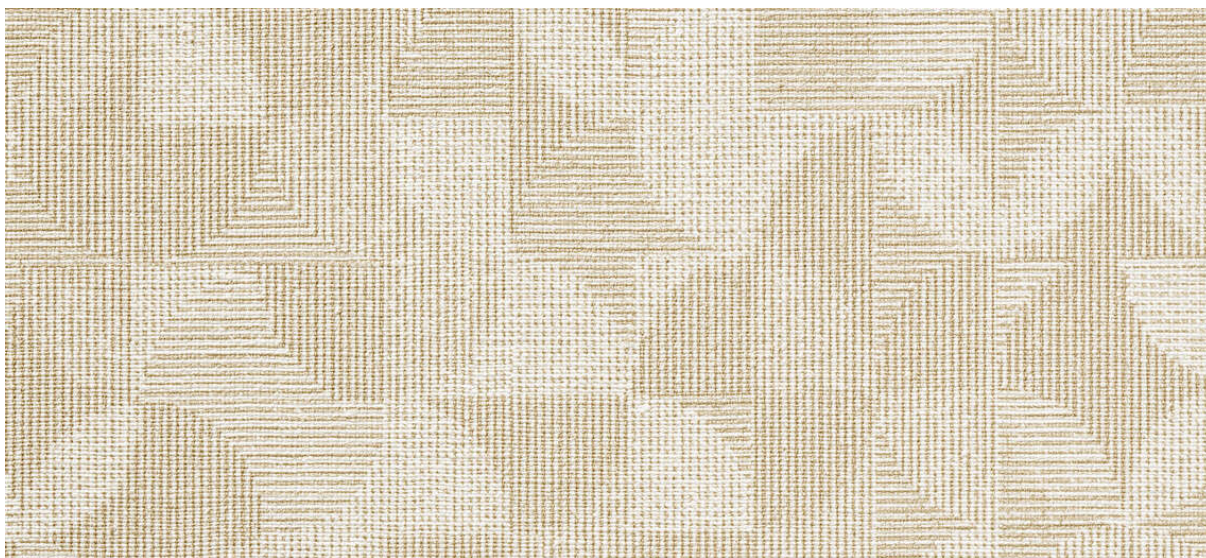


arches

7066.01 - 7066.17



binder

upholstery
vinyl

opis

struktura dynamicznego splotu tkaniny

skład

**spieniony winyl, na podkładzie
bawełniano-poliestrowym o splotie
dzianinowym**

szerokość

± 137-140 cm, ± 54-55 inches

gramatura

**backing: ± 110 gr/m², ± 5 oz/yd¹
coating: ± 690 gr/m², ± 31 oz/yd¹**

grubość

1.1 mm, 0.04 inches

odporność ogniowa

**EN 1021/1-2
BS 5852, crib 5
NF P 92/503 - 507, M2
NF D60-013 (AM 18)
DIN 4102, B2
UNI 9175, classe 1 IM
Cal TB 117
NFPA 260, class 1
IMO 2010 FTP part 8**

odporność na ścieranie

ISO 12947-2

> 300.000 rubs martindale

ASTM D4157

100.000 double rubs wyzenbeek

odporność na wycieranie

ISO 105-X12

wet 5 / dry 5 (scale 1-5)

AATCC 8

wet 5 / dry 5 (scale 1-5)

odporność na działanie światła

ISO 105-B02

7 (scale 1-8)

ASTM D4329: 150 hours

4 (scale 1-5)

odporność na krew, urynę, pot i tłuszcz ludzki

EN 12720

5 (scale 1-5)

odporność na tarcie

ISO 1421

length 470 N / width 313 N

ASTM D2261

length 7 lbs / width 9 lbs

odporność na deformację

ISO 7854

400.000 cycles

spoistość

ASTM D751

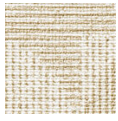
length 8 lbf / width 5 lbf



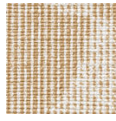
vinyl 
COMMITTED TO
SUSTAINABLE DEVELOPMENT

arches

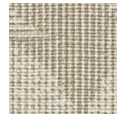
7066.01 - 7066.17



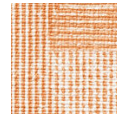
7066.01



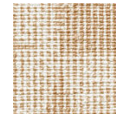
7066.02



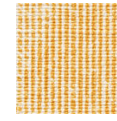
7066.03



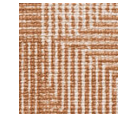
7066.04



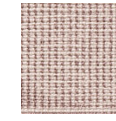
7066.05



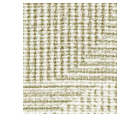
7066.06



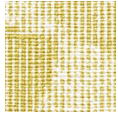
7066.07



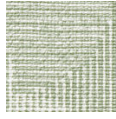
7066.08



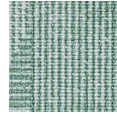
7066.09



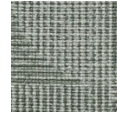
7066.10



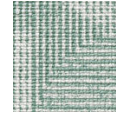
7066.11



7066.12



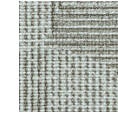
7066.13



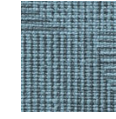
7066.14



7066.15



7066.16



7066.17