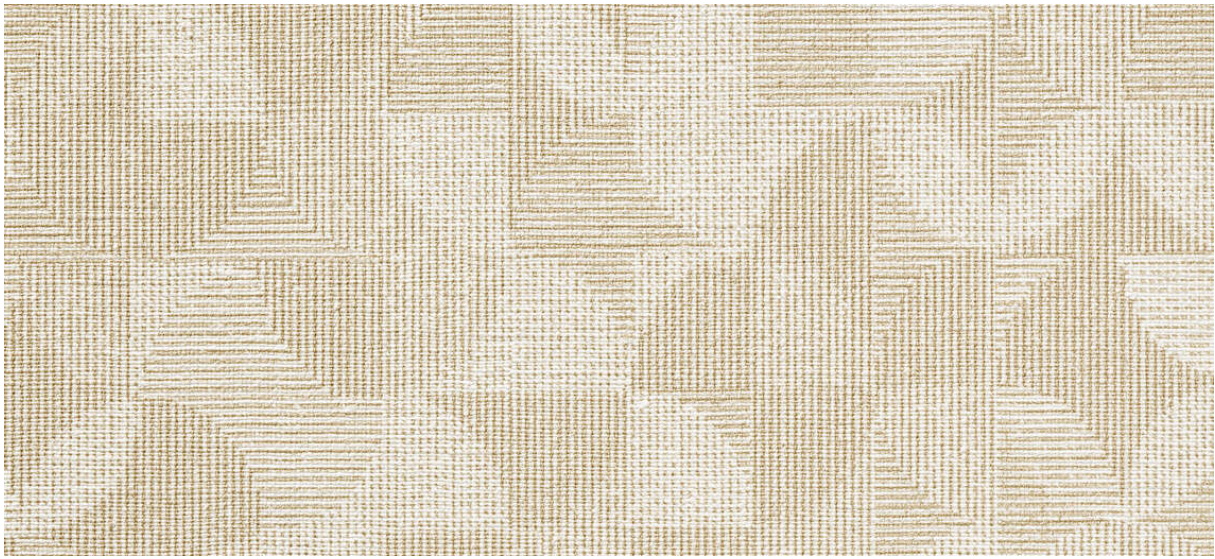


arches

7066.01 - 7066.17



binder

upholstery
vinyl

描述

动态织物结构

组成

发泡PVC,加棉或涤底

宽度

± 137-140 cm, ± 54-55 inches

重量

底层: ± 110 gr/m², ± 5 oz/yd¹

涂层: ± 690 gr/m², ± 31 oz/yd¹

厚度

1,1 mm, 0,04 inches

阻燃

EN 1021/1—2

BS 5852, crib 5

NF P 92/503 — 507, M2

NF D60—013 (AM 18)

DIN 4102, B2

UNI 9175, classe 1 IM

Cal TB 117

NFPA 260, class 1

IMO 2010 FTP part 8

耐磨性

ISO 12947—2

> 300,000 rubs martindale

ASTM D4157

100,000 double rubs wyzenbeek

耐擦拭

ISO 105—X12

wet 5 / dry 5 (scale 1—5)

AATCC 8

wet 5 / dry 5 (scale 1—5)

耐褪色

ISO 105—B02

7 (scale 1—8)

ASTM D4329: 150 hours

4 (scale 1—5)

耐血液，尿液，汗液和皮肤脂肪

EN 12720

5 (scale 1—5)

屈伸强度

ISO 1421

length 470 N / width 313 N

ASTM D2261

length 7 lbs / width 9 lbs

灵活性

ISO 7854

400,000 cycles

涂层粘结力

ASTM D751

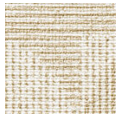
length 8 lbf / width 5 lbf



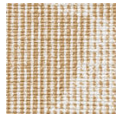
vinyl 
COMMITTED TO
SUSTAINABLE DEVELOPMENT

arches

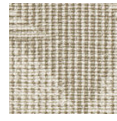
7066.01 - 7066.17



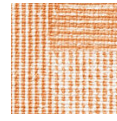
7066.01



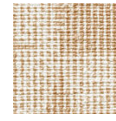
7066.02



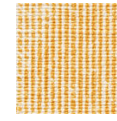
7066.03



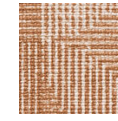
7066.04



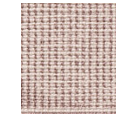
7066.05



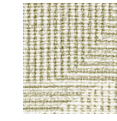
7066.06



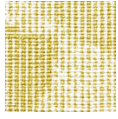
7066.07



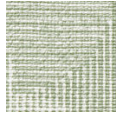
7066.08



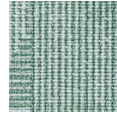
7066.09



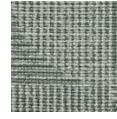
7066.10



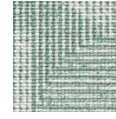
7066.11



7066.12



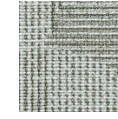
7066.13



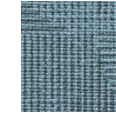
7066.14



7066.15



7066.16



7066.17