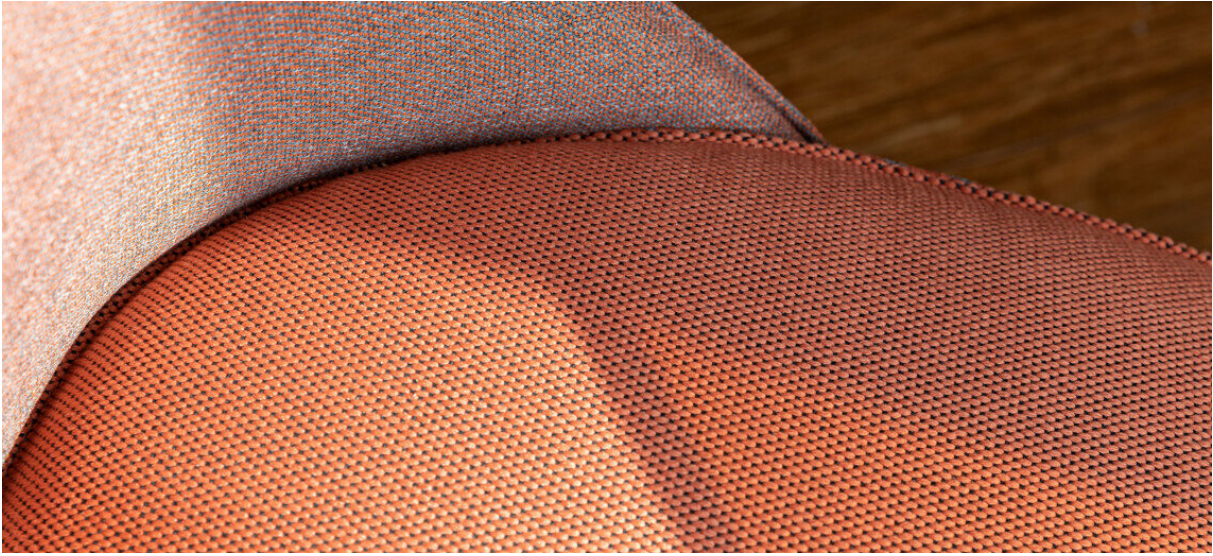


wilson

7067.01 - 7067.21



Kollektion

upholstery

Beschreibung

**Unifarbener Möbelstoff aus 100 %
recyclten PET-Flaschen, matt glänzende
grob gewebte All-Over-Struktur mit weicher
Haptik**

Zusammensetzung

100% recycled polyester FR

Breite

± 150 cm, ± 59 inches

Gewicht

± 771 gr/m¹, ± 25 oz/yd¹ fabrics

Brandschutzklasse

EN 1021/ 1-2

BS 5852, crib 5

NF D 60-013 (AM 18)

DIN 4102, B1

UNI 9175, classe 1.IM

Cal TB 117

NFPA 260, class 1

IMO 2010 FTP part 8

Abrieb

ISO 12947-2

80.000 rubs martindale

ASTM D4157

100.000 double rubs wyzenbeek

Pillingbildung

ISO 12945-2

4-5 (skala 1-5)

Reibechtheit

ISO 105-X12

nass 4-5 / trocken 4-5 (skala 1-5)

Lichtechtheit

ISO 105-B02

6 (skala 1-8)

Nahtschiebewiderstand

ISO 13936-2

Kette 4 mm / Schuss 2 mm

Reißfestigkeit

ISO 13934-1

Kette 1480 N / Schuss >2500 N

Pflege



Schrumpfwerte: Kette -1.6% / Schuss -2.8%

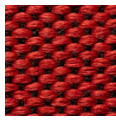


STANDARD
100

S21-3365
Hohenstein HTTI

wilson

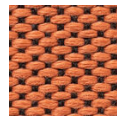
7067.01 - 7067.21



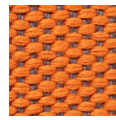
7067.01



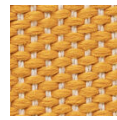
7067.02



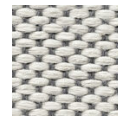
7067.03



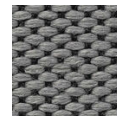
7067.04



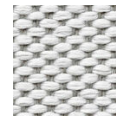
7067.05



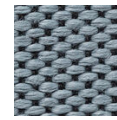
7067.06



7067.07



7067.08



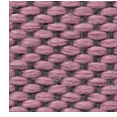
7067.09



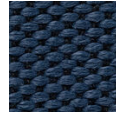
7067.10



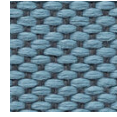
7067.11



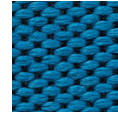
7067.12



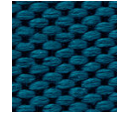
7067.13



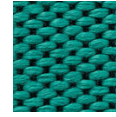
7067.14



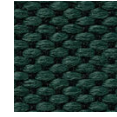
7067.15



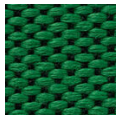
7067.16



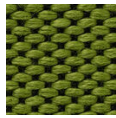
7067.17



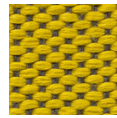
7067.18



7067.19



7067.20



7067.21