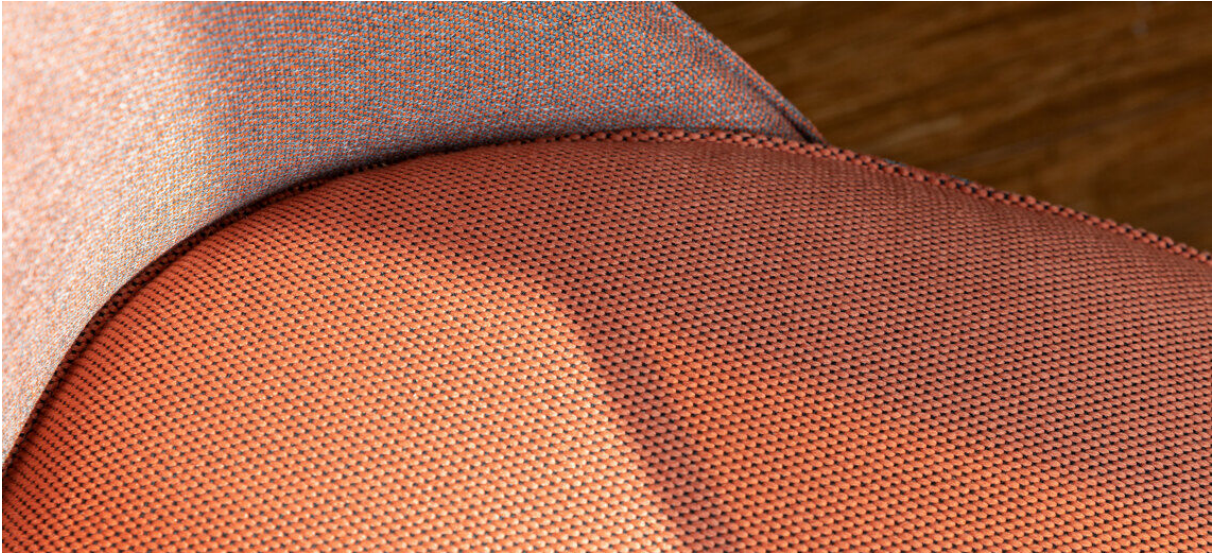


wilson

7067.01 - 7067.21



binder

upholstery

description

plain upholstery fabric made from 100% recycled plastic waste, a matte non-directional structure with a soft touch

composition

100% recycled polyester FR

width

± 150 cm, ± 59 inches

weight

± 771 gr/m¹, ± 25 oz/yd¹ fabrics

flame retardancy

EN 1021/ 1-2

BS 5852, crib 5

NF D 60-013 (AM 18)

DIN 4102, B1

UNI 9175, classe 1.IM

Cal TB 117

NFPA 260, class 1

IMO 2010 FTP part 8

abrasion

ISO 12947-2

80.000 rubs martindale

ASTM D4157

100.000 double rubs wyzenbeek

pilling

ISO 12945-2

4-5 (scale 1-5)

colorfastness to crocking

ISO 105-X12

wet 4-5 / dry 4-5 (scale 1-5)

colorfastness to light

ISO 105-B02

6 (scale 1-8)

seam slippage

ISO 13936-2

warp 4 mm / weft 2 mm

breaking strength

ISO 13934-1

warp 1480 N / weft >2500 N

care



shrinkage: warp -1.6% / weft -2.8%

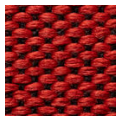


STANDARD
100

S21-3365
Hohenstein HTTI

wilson

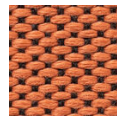
7067.01 - 7067.21



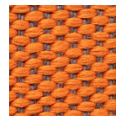
7067.01



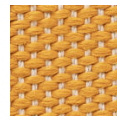
7067.02



7067.03



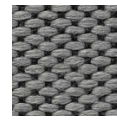
7067.04



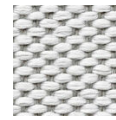
7067.05



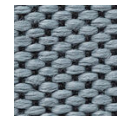
7067.06



7067.07



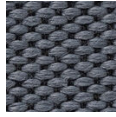
7067.08



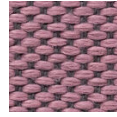
7067.09



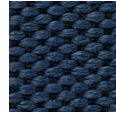
7067.10



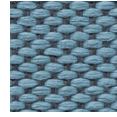
7067.11



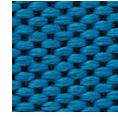
7067.12



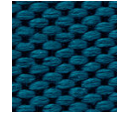
7067.13



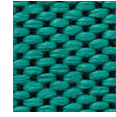
7067.14



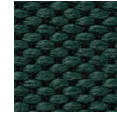
7067.15



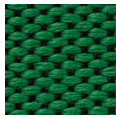
7067.16



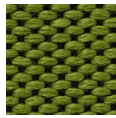
7067.17



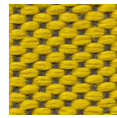
7067.18



7067.19



7067.20



7067.21