

wilson

7067.01 - 7067.21



binder

upholstery

descripción

tela para tapicería lisa fabricada con residuos de plástico 100% reciclado, una estructura mate no direccional con un tacto suave

composición

100% recycled polyester FR

ancho

± 150 cm, ± 59 inches

peso

± 771 gr/m¹, ± 25 oz/yd¹ fabrics

combustión retardada

EN 1021/ 1-2

BS 5852, crib 5

NF D 60-013 (AM 18)

DIN 4102, B1

UNI 9175, classe 1.IM

Cal TB 117

NFPA 260, class 1

IMO 2010 FTP part 8

resistencia al desgaste

ISO 12947-2

80.000 rubs martindale

ASTM D4157

100.000 double rubs wyzenbeek

pilling

ISO 12945-2

4-5 (escala 1-5)

resistencia al frotamiento

ISO 105-X12

mojado 4-5 / seco 4-5 (escala 1-5)

insensibilidad a la luz

ISO 105-B02

6 (escala 1-8)

resistencia al deslizamiento de costuras

ISO 13936-2

lizo 4 mm / trama 2 mm

resistencia a la tensión

ISO 13934-1

lizo 1480 N / trama >2500 N

mantenimiento



carencia: lizo -1.6% / trama -2.8%

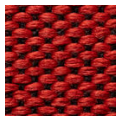


STANDARD
100

S21-3365
Hohenstein HTTI

wilson

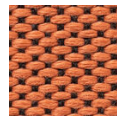
7067.01 - 7067.21



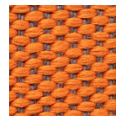
7067.01



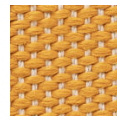
7067.02



7067.03



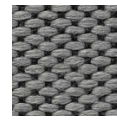
7067.04



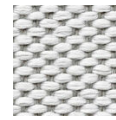
7067.05



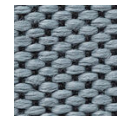
7067.06



7067.07



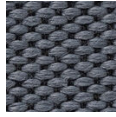
7067.08



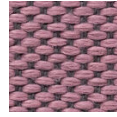
7067.09



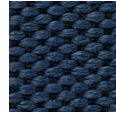
7067.10



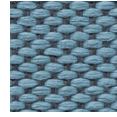
7067.11



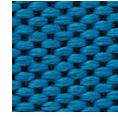
7067.12



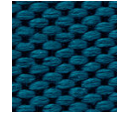
7067.13



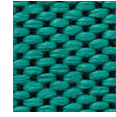
7067.14



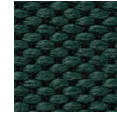
7067.15



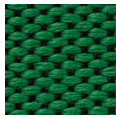
7067.16



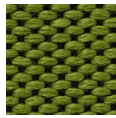
7067.17



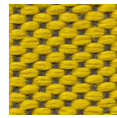
7067.18



7067.19



7067.20



7067.21