

# wilson

7067.01 - 7067.21



binder

**upholstery**

opis

**gładki materiał obiciowy wykonany w 100% z plastiku pochodzącego z recyklingu, matowa bezkierunkowa struktura, miękka w dotyku**

skład

**100% recycled polyester FR**

szerokość

**± 150 cm, ± 59 inches**

gramatura

**± 771 gr/m<sup>2</sup>, ± 25 oz/yd<sup>2</sup> fabrics**

odporność ogniowa

**EN 1021/ 1-2**

**BS 5852, crib 5**

**NF D 60-013 (AM 18)**

**DIN 4102, B1**

**UNI 9175, classe 1.IM**

**Cal TB 117**

**NFPA 260, class 1**

**IMO 2010 FTP part 8**

odporność na ścieranie

**ISO 12947-2**

80.000 rubs martindale

**ASTM D4157**

100.000 double rubs wyzenbeek

odporność na wyrywanie włókien

**ISO 12945-2**

4-5 (skala 1-5)

odporność na wycieranie

**ISO 105-X12**

mokre 4-5 / suche 4-5 (skala 1-5)

odporność na działanie światła

**ISO 105-B02**

6 (skala 1-8)

wytrzymałość szwów

**ISO 13936-2**

łańcuch 4 mm / wątek 2 mm

odporność na tarcie

**ISO 13934-1**

łańcuch 1480 N / wątek >2500 N

codzienna dbałość o produkt



**kurczliwość: łańcuch -1.6% / wątek -2.8%**



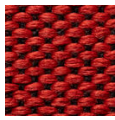
STANDARD  
100

S21-3365  
Hohenstein HTTI

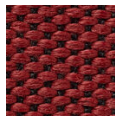
# wilson

7067.01 - 7067.21

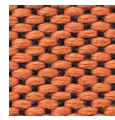
---



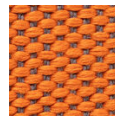
7067.01



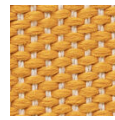
7067.02



7067.03



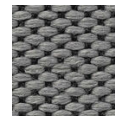
7067.04



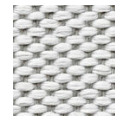
7067.05



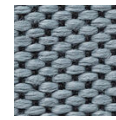
7067.06



7067.07



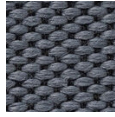
7067.08



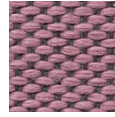
7067.09



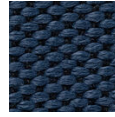
7067.10



7067.11



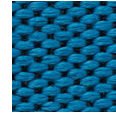
7067.12



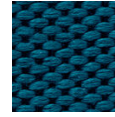
7067.13



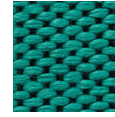
7067.14



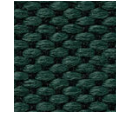
7067.15



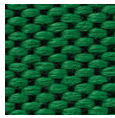
7067.16



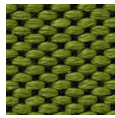
7067.17



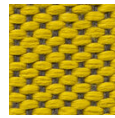
7067.18



7067.19



7067.20



7067.21