

# norfolk

7069.01 – 7069.16



binder

**upholstery**

description

**two-tonal upholstery fabric made from 100% recycled plastic waste, an all-over graphic grid with a three-dimensional effect**

composition

**100% recycled polyester FR**

width

**± 148 cm, ± 58 inches**

weight

**± 624 gr/m<sup>1</sup>, ± 20 oz/yd<sup>1</sup> fabrics**

flame retardancy

**EN 1021/ 1-2**

**BS 5852, crib 5**

**NF D 60-013 (AM 18)**

**DIN 4102, B1**

**UNI 9175, classe 1.IM**

**Cal TB 117**

**NFPA 260, class 1**

**IMO 2010 FTP part 8**

abrasion

**ISO 12947-2**

70.000 rubs martindale

**ASTM D4157**

100.000 double rubs wyzenbeek

pilling

**ISO 12945-2**

4-5 (scale 1-5)

colorfastness to crocking

**ISO 105-X12**

wet 4-5 / dry 4-5 (scale 1-5)

colorfastness to light

**ISO 105-B02**

6 (scale 1-8)

seam slippage

**ISO 13936-2**

warp 3 mm / weft 2 mm

breaking strength

**ISO 13934-1**

warp 1320 N / weft >2500 N

care



**shrinkage: warp -2% / weft -3%**



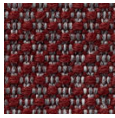
STANDARD  
100

S21-3365  
Hohenstein HTTI

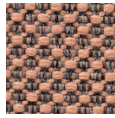
# norfolk

7069.01 – 7069.16

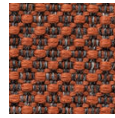
---



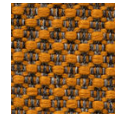
7069.01



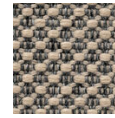
7069.02



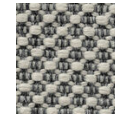
7069.03



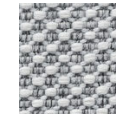
7069.04



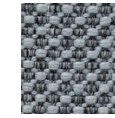
7069.05



7069.06



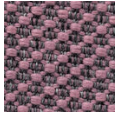
7069.07



7069.08



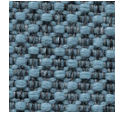
7069.09



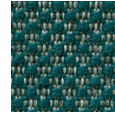
7069.10



7069.11



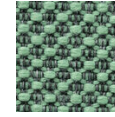
7069.12



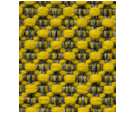
7069.13



7069.14



7069.15



7069.16