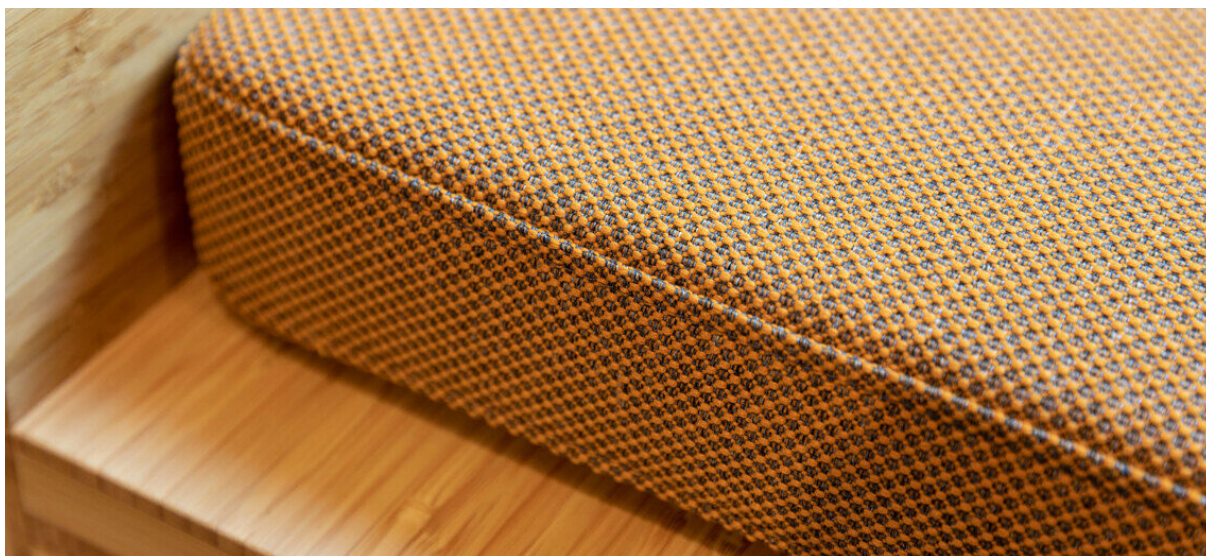


norfolk

7069.01 – 7069.16



binder

upholstery

omschrijving

tweekleurige meubelstof gemaakt van 100% gerecycled plastic afval, een all-over grafisch grid met een driedimensionaal effect

samenstelling

100% recycled polyester FR

breedte

± 148 cm, ± 58 inches

gewicht

± 624 gr/m¹, ± 20 oz/yd¹ fabrics

brandwerendheid

EN 1021/ 1-2

BS 5852, crib 5

NF D 60-013 (AM 18)

DIN 4102, B1

UNI 9175, classe 1.IM

Cal TB 117

NFPA 260, class 1

IMO 2010 FTP part 8

slijtvastheid

ISO 12947-2

70.000 rubs martindale

ASTM D4157

100.000 double rubs wyzenbeek

pilling

ISO 12945-2

4-5 (schaal 1-5)

wrijftechtheid

ISO 105-X12

nat 4-5 / droog 4-5 (schaal 1-5)

lichtechtheid

ISO 105-B02

6 (schaal 1-8)

naadschuifweerstand

ISO 13936-2

ketting 3 mm / inslag 2 mm

treksterkte

ISO 13934-1

ketting 1320 N / inslag >2500 N

onderhoud



krimp: ketting -2% / inslag -3%

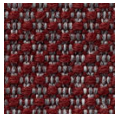


STANDARD
100

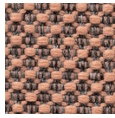
S21-3365
Hohenstein HTTI

norfolk

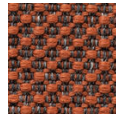
7069.01 – 7069.16



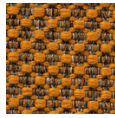
7069.01



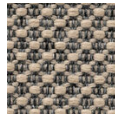
7069.02



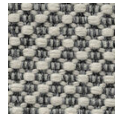
7069.03



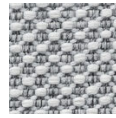
7069.04



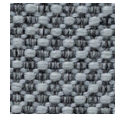
7069.05



7069.06



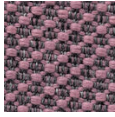
7069.07



7069.08



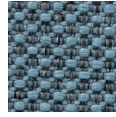
7069.09



7069.10



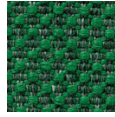
7069.11



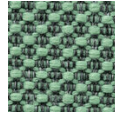
7069.12



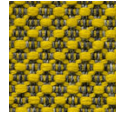
7069.13



7069.14



7069.15



7069.16