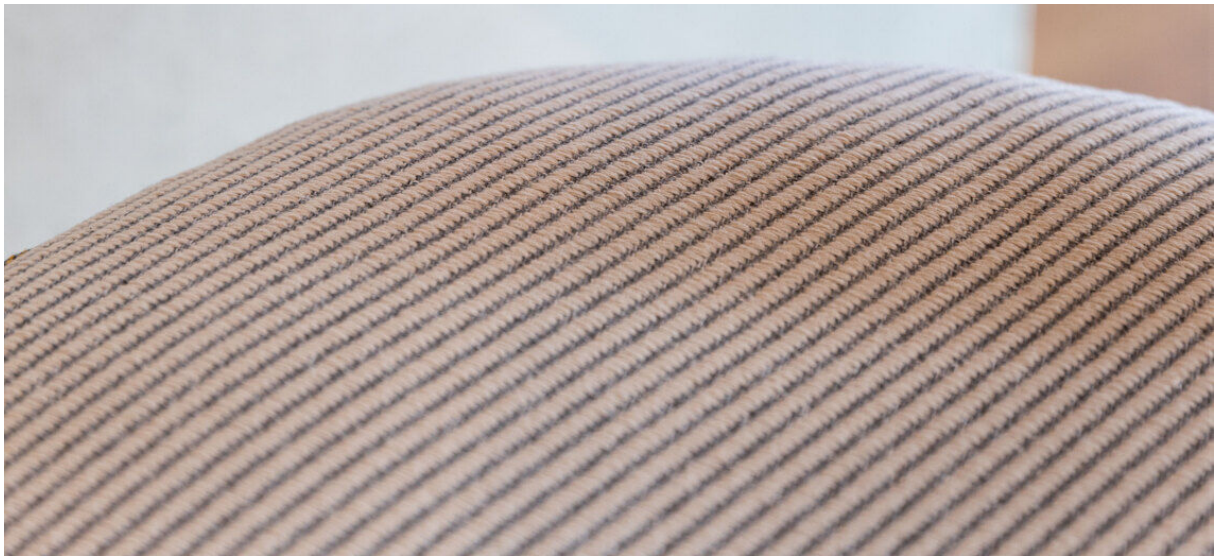


harding

7070.01 – 7070.08



binder

upholstery

description

two-tonal twill upholstery fabric made from 100% recycled plastic waste

composition

100% recycled polyester FR

width

± 151 cm, ± 59 inches

weight

± 660 gr/m¹, ± 21 oz/yd¹ fabrics

flame retardancy

EN 1021/ 1-2

BS 5852, crib 5

NF D 60-013 (AM 18)

DIN 4102, B1

UNI 9175, classe 1.IM

Cal TB 117

NFPA 260, class 1

IMO 2010 FTP part 8

abrasion

ISO 12947-2

130.000 rubs martindale

ASTM D4157

100.000 double rubs wyzenbeek

pilling

ISO 12945-2

4-5 (scale 1-5)

colorfastness to crocking

ISO 105-X12

wet 4-5 / dry 4-5 (scale 1-5)

colorfastness to light

ISO 105-B02

6 (scale 1-8)

seam slippage

ISO 13936-2

warp 3 mm / weft 2 mm

breaking strength

ISO 13934-1

warp 1220 N / weft >2500 N

care



shrinkage: warp -2% / weft -2%

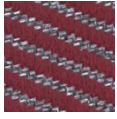


STANDARD
100

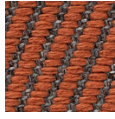
S21-3365
Hohenstein HTTI

harding

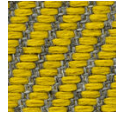
7070.01 – 7070.08



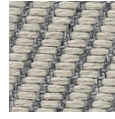
7070.01



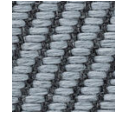
7070.02



7070.03



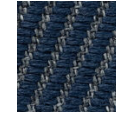
7070.04



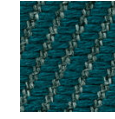
7070.05



7070.06



7070.07



7070.08