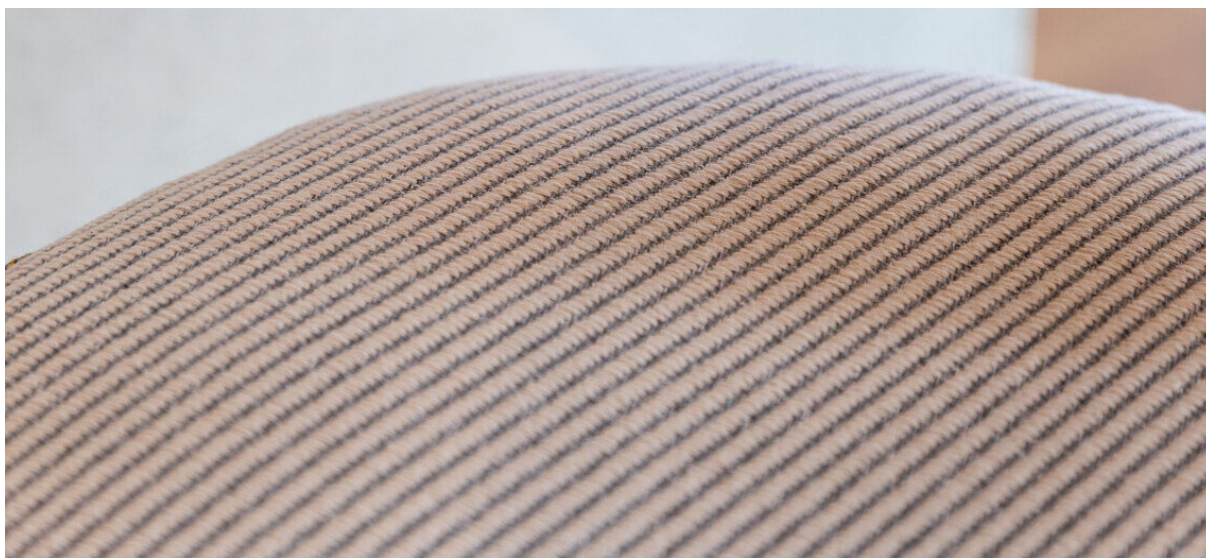


# harding

7070.01 – 7070.08



## binder

upholstery

## 描述

是一款由100%回收塑料废料制成的双色调斜纹面料

## 组成

100% recycled polyester FR

## 宽度

± 151 cm, ± 59 inches

## 重量

± 660 gr/m<sup>2</sup>, ± 21 oz/yd<sup>2</sup> fabrics

## 阻燃

EN 1021/ 1–2

BS 5852, crib 5

NF D 60–013 (AM 18)

DIN 4102, B1

UNI 9175, classe 1,IM

Cal TB 117

NFPA 260, class 1

IMO 2010 FTP part 8

## 耐磨性

ISO 12947–2

130,000 rubs martindale

ASTM D4157

100,000 double rubs wyzenbeek

## 起毛

ISO 12945–2

4–5 (由 1–5)

## 耐擦拭

ISO 105–X12

湿 4–5 / 干 4–5 (由 1–5)

## 耐褪色

ISO 105–B02

6 (由 1–8)

## 耐滑缝

ISO 13936–2

纵向收缩比 3 mm / 横向收缩比 2 mm

## 屈伸强度

ISO 13934–1

纵向收缩比 1220 N / 横向收缩比 >2500 N



收缩□ : 纵向收缩比 -2% / 横向收缩比 -2%



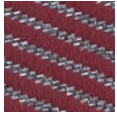
STANDARD  
100

S21-3365  
Hohenstein HTTI

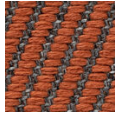
# harding

7070.01 – 7070.08

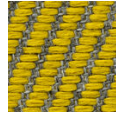
---



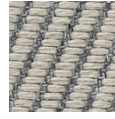
7070.01



7070.02



7070.03



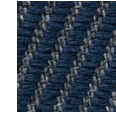
7070.04



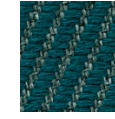
7070.05



7070.06



7070.07



7070.08