

# foster

7072.01 – 7072.27



## Kollektion

**upholstery**

## Beschreibung

**Unifarbener, vielseitig einsetzbarer  
Bouclé-Möbelstoff mit Soft Touch**

## Zusammensetzung

**97% recycled polyester FR / 3% polyester FR**

## Breite

**± 141 cm, ± 56 inches**

## Gewicht

**± 749 gr/m<sup>1</sup>, ± 24 oz/yd<sup>1</sup> fabrics**

## Brandschutzklasse

**EN 1021/1-2**

**BS 5852, crib 5**

**NF P 92 / 503 – 507, M1**

**DIN 4102, B1**

**UNI 9175, classe 1.IM**

**Cal TB 117**

**NFPA 260, class 1**

**IMO 2010 FTP part 8**

## Abrieb

**ISO 12947-2**

60.000 rubs martindale

**ASTM D4157**

100.000 double rubs wyzenbeek

## Pillingbildung

**ISO 12945-2**

4 (skala 1–5)

**ASTM D3511**

5 (skala 1–5)

## Reibechtheit

**ISO 105-X12**

nass 4–5 / trocken 4–5 (skala 1–5)

**AATCC 8**

nass 5 / trocken 5 (skala 1–5)

## Lichtechtheit

**ISO 105-B02**

6 (skala 1–8)

**AATCC 16.3: 40 hours**

5 (skala 1–5)

## Nahtschibewiderstand

**ISO 13936-2**

Kette 4 mm / Schuss 2 mm

**ASTM D4034**

warp 51 lbs / weft 106 lbs

## Reißfestigkeit

**ISO 13934-1**

Kette 1370 N / Schuss 1220 N

**ASTM D5034**

warp 263 lbs / weft 234 lbs

## Pflege



**Schrumpfwerte: Kette -2% / Schuss -1.7%**



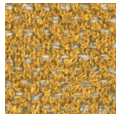
STANDARD  
100

S21-3365  
Hohenstein HTTI

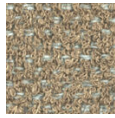
# foster

7072.01 – 7072.27

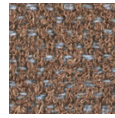
---



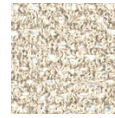
7072.01



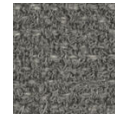
7072.02



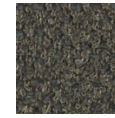
7072.03



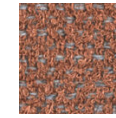
7072.04



7072.05



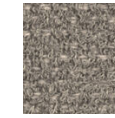
7072.06



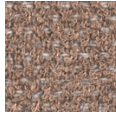
7072.07



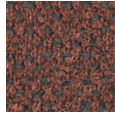
7072.08



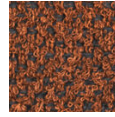
7072.09



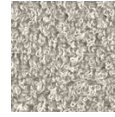
7072.10



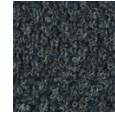
7072.11



7072.12



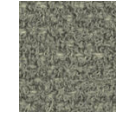
7072.13



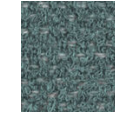
7072.14



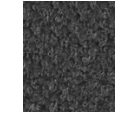
7072.15



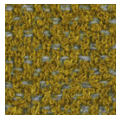
7072.16



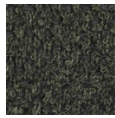
7072.17



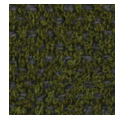
7072.18



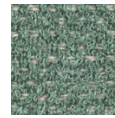
7072.19



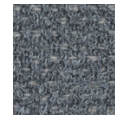
7072.20



7072.21



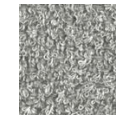
7072.22



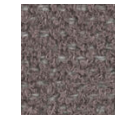
7072.23



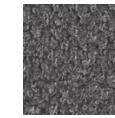
7072.24



7072.25



7072.26



7072.27