

foster

7072.01 – 7072.27



binder

upholstery

description

un tissu d'ameublement unicolore, universel et bouclé, au toucher ultra-doux

composition

97% recycled polyester FR / 3% polyester FR

largeur

± 141 cm, ± 56 inches

poids

± 749 gr/m¹, ± 24 oz/yd¹ fabrics

non feu

EN 1021/1-2

BS 5852, crib 5

NF P 92 / 503 – 507, M1

DIN 4102, B1

UNI 9175, classe 1.IM

Cal TB 117

NFPA 260, class 1

IMO 2010 FTP part 8

résistance à l'abrasion

ISO 12947-2

60.000 rubs martindale

ASTM D4157

100.000 double rubs wyzenbeek

boulochage

ISO 12945-2

4 (échelle 1-5)

ASTM D3511

5 (échelle 1-5)

résistance au frottement

ISO 105-X12

humide 4-5 / sèche 4-5 (échelle 1-5)

AATCC 8

humide 5 / sèche 5 (échelle 1-5)

solidité lumière

ISO 105-B02

6 (échelle 1-8)

AATCC 16.3: 40 hours

5 (échelle 1-5)

résistance au glissement à la couture

ISO 13936-2

chaîne 4 mm / trame 2 mm

ASTM D4034

warp 51 lbs / weft 106 lbs

résistance à la traction

ISO 13934-1

chaîne 1370 N / trame 1220 N

ASTM D5034

warp 263 lbs / weft 234 lbs

entretien



rétrécissement: chaîne -2% / trame -1.7%

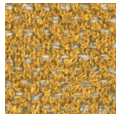


STANDARD
100

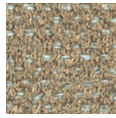
S21-3365
Hohenstein HTTI

foster

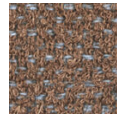
7072.01 – 7072.27



7072.01



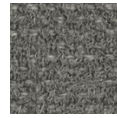
7072.02



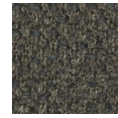
7072.03



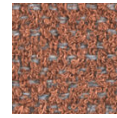
7072.04



7072.05



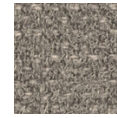
7072.06



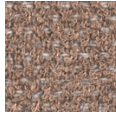
7072.07



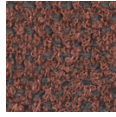
7072.08



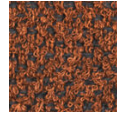
7072.09



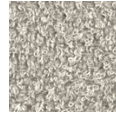
7072.10



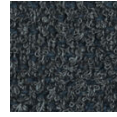
7072.11



7072.12



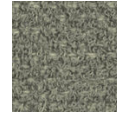
7072.13



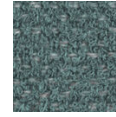
7072.14



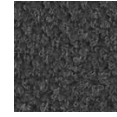
7072.15



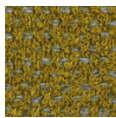
7072.16



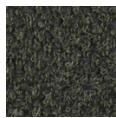
7072.17



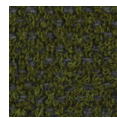
7072.18



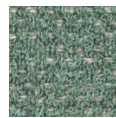
7072.19



7072.20



7072.21



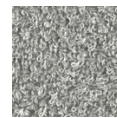
7072.22



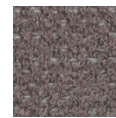
7072.23



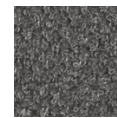
7072.24



7072.25



7072.26



7072.27