

foster

7072.01 – 7072.27



binder

upholstery

descrizione

bouclé in tinta unita, versatile e soffice al tatto

composizione

97% recycled polyester FR / 3% polyester FR

altezza

± 141 cm, ± 56 inches

peso

± 749 gr/m¹, ± 24 oz/yd¹ fabrics

resistenza al fuoco

EN 1021/1-2

BS 5852, crib 5

NF P 92 / 503 – 507, M1

DIN 4102, B1

UNI 9175, classe 1.IM

Cal TB 117

NFPA 260, class 1

IMO 2010 FTP part 8

resistenza all'abrasione

ISO 12947-2

60.000 rubs martindale

ASTM D4157

100.000 double rubs wyzenbeek

resistenza al pilling

ISO 12945-2

4 (scala 1-5)

ASTM D3511

5 (scala 1-5)

solidità allo sfregamento

ISO 105-X12

bagnato 4-5 / asciutto 4-5 (scala 1-5)

AATCC 8

bagnato 5 / asciutto 5 (scala 1-5)

resistenza alla luce

ISO 105-B02

6 (scala 1-8)

AATCC 16.3: 40 hours

5 (scala 1-5)

resistenza al taglio cucitura

ISO 13936-2

catena 4 mm / trama 2 mm

ASTM D4034

warp 51 lbs / weft 106 lbs

resistenza alla trazione

ISO 13934-1

catena 1370 N / trama 1220 N

ASTM D5034

warp 263 lbs / weft 234 lbs

manutenzione



restringimento: catena -2% / trama -1.7%

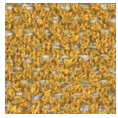


STANDARD
100

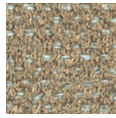
S21-3365
Hohenstein HTTI

foster

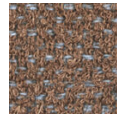
7072.01 – 7072.27



7072.01



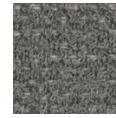
7072.02



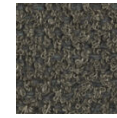
7072.03



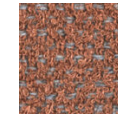
7072.04



7072.05



7072.06



7072.07



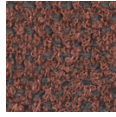
7072.08



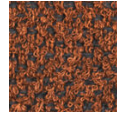
7072.09



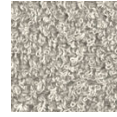
7072.10



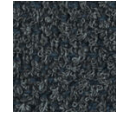
7072.11



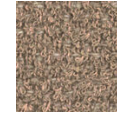
7072.12



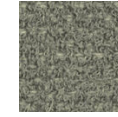
7072.13



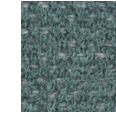
7072.14



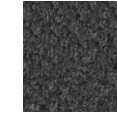
7072.15



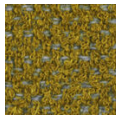
7072.16



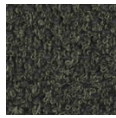
7072.17



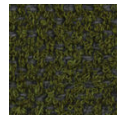
7072.18



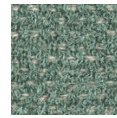
7072.19



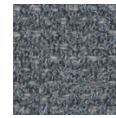
7072.20



7072.21



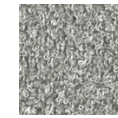
7072.22



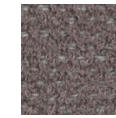
7072.23



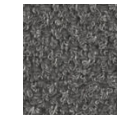
7072.24



7072.25



7072.26



7072.27