

# auckland

7071.01 – 7071.34



binder

**upholstery**

description

**a boucle upholstery fabric with a two-tonal, playful, non-directional grid**

composition

**76% recycled polyester FR / 24% polyester FR**

width

**± 141 cm, ± 56 inches**

weight

**± 704 gr/m<sup>1</sup>, ± 23 oz/yd<sup>1</sup> fabrics**

flame retardancy

**EN 1021/1-2**

**BS 5852, crib 5**

**NF P 92503-507, M1**

**NF D 60-013 (AM 18)**

**DIN 4102, B1**

**UNI 9175, classe 1.IM**

**Cal TB 117**

**NFPA 260, class 1**

**IMO 2010 FTP part 8**

abrasion

**ISO 12947-2**

60.000 rubs martindale

**ASTM D4157**

80.000 double rubs wyzenbeek

pilling

**ISO 12945-2**

4 (scale 1-5)

**ASTM D3511**

5 (scale 1-5)

colorfastness to crocking

**ISO 105-X12**

wet 4-5 / dry 4-5 (scale 1-5)

**AATCC 8**

wet 5 / dry 5 (scale 1-5)

colorfastness to light

**ISO 105-B02**

6 (scale 1-8)

**AATCC 16.3: 40 hours**

5 (scale 1-5)

seam slippage

**ISO 13936-2**

warp 3 mm / weft 3 mm

**ASTM D4034**

warp 128 lbs / weft 112 lbs

breaking strength

**ISO 13934-1**

warp 1550 N / weft 2500 N

**ASTM D5034**

warp 220 lbs / weft 402 lbs

care



**shrinkage: warp -2.4% / weft -1.4%**



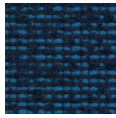
STANDARD  
100

S21-3365  
Hohenstein HTTI

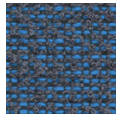
# auckland

7071.01 – 7071.34

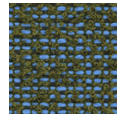
---



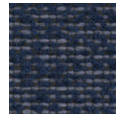
7071.01



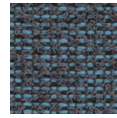
7071.02



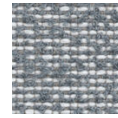
7071.03



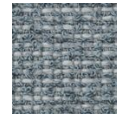
7071.04



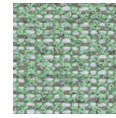
7071.05



7071.06



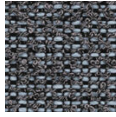
7071.07



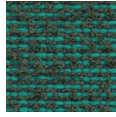
7071.08



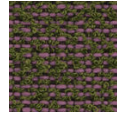
7071.09



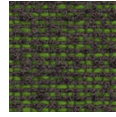
7071.10



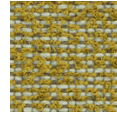
7071.11



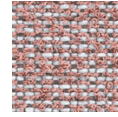
7071.12



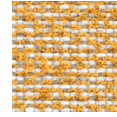
7071.13



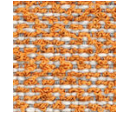
7071.14



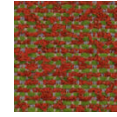
7071.15



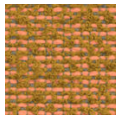
7071.16



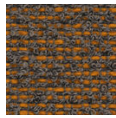
7071.17



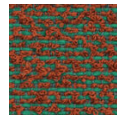
7071.18



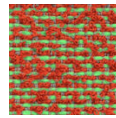
7071.19



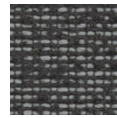
7071.20



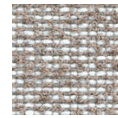
7071.21



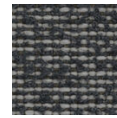
7071.22



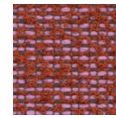
7071.23



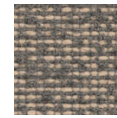
7071.24



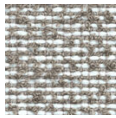
7071.25



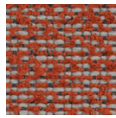
7071.26



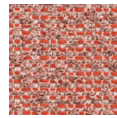
7071.27



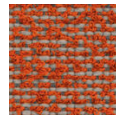
7071.28



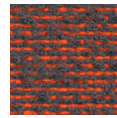
7071.29



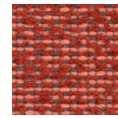
7071.30



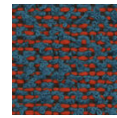
7071.31



7071.32



7071.33



7071.34