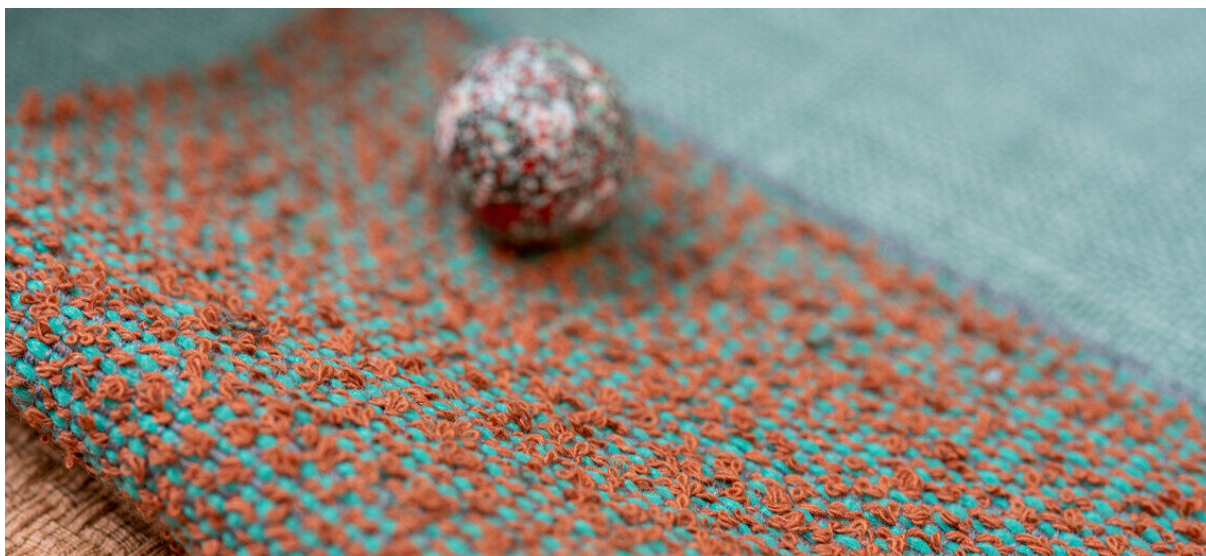


auckland

7071.01 – 7071.34



binder

upholstery

opis

materiał obiciowy boucle z dwukolorową, nieszablonową, bezkierunkową siatką

skład

76% recycled polyester FR / 24% polyester FR

szerokość

± 141 cm, ± 56 inches

gramatura

± 704 gr/m¹, ± 23 oz/yd¹ fabrics

odporność ogniowa

EN 1021/1-2

BS 5852, crib 5

NF P 92503-507, M1

NF D 60-013 (AM 18)

DIN 4102, B1

UNI 9175, classe 1.IM

Cal TB 117

NFPA 260, class 1

IMO 2010 FTP part 8

odporność na ścieranie

ISO 12947-2

60.000 rubs martindale

ASTM D4157

80.000 double rubs wyzenbeek

odporność na wyrywanie włókien

ISO 12945-2

4 (skala 1-5)

ASTM D3511

5 (skala 1-5)

odporność na wycieranie

ISO 105-X12

mokre 4-5 / suche 4-5 (skala 1-5)

AATCC 8

mokre 5 / suche 5 (skala 1-5)

odporność na działanie światła

ISO 105-B02

6 (skala 1-8)

AATCC 16.3: 40 hours

5 (skala 1-5)

wytrzymałość szwów

ISO 13936-2

łańcuch 3 mm / wątek 3 mm

ASTM D4034

warp 128 lbs / weft 112 lbs

odporność na tarcie

ISO 13934-1

łańcuch 1550 N / wątek 2500 N

ASTM D5034

warp 220 lbs / weft 402 lbs

codzienna dbałość o produkt



kurczliwość: łańcuch -2.4% / wątek -1.4%

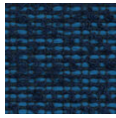


STANDARD
100

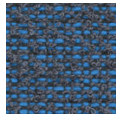
S21-3365
Hohenstein HTTI

auckland

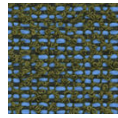
7071.01 – 7071.34



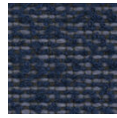
7071.01



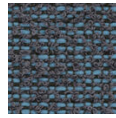
7071.02



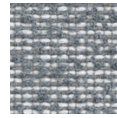
7071.03



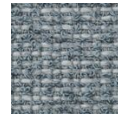
7071.04



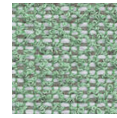
7071.05



7071.06



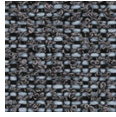
7071.07



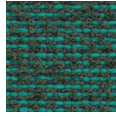
7071.08



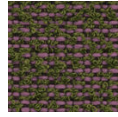
7071.09



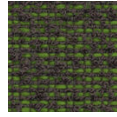
7071.10



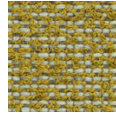
7071.11



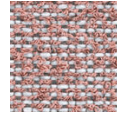
7071.12



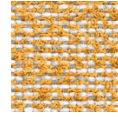
7071.13



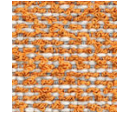
7071.14



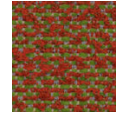
7071.15



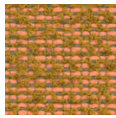
7071.16



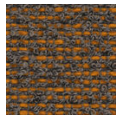
7071.17



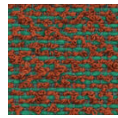
7071.18



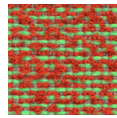
7071.19



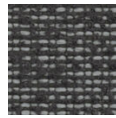
7071.20



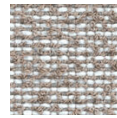
7071.21



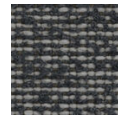
7071.22



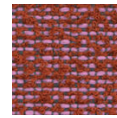
7071.23



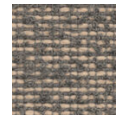
7071.24



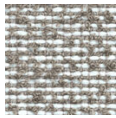
7071.25



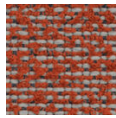
7071.26



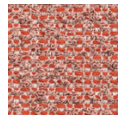
7071.27



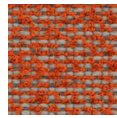
7071.28



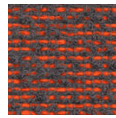
7071.29



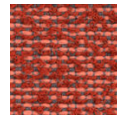
7071.30



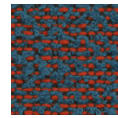
7071.31



7071.32



7071.33



7071.34