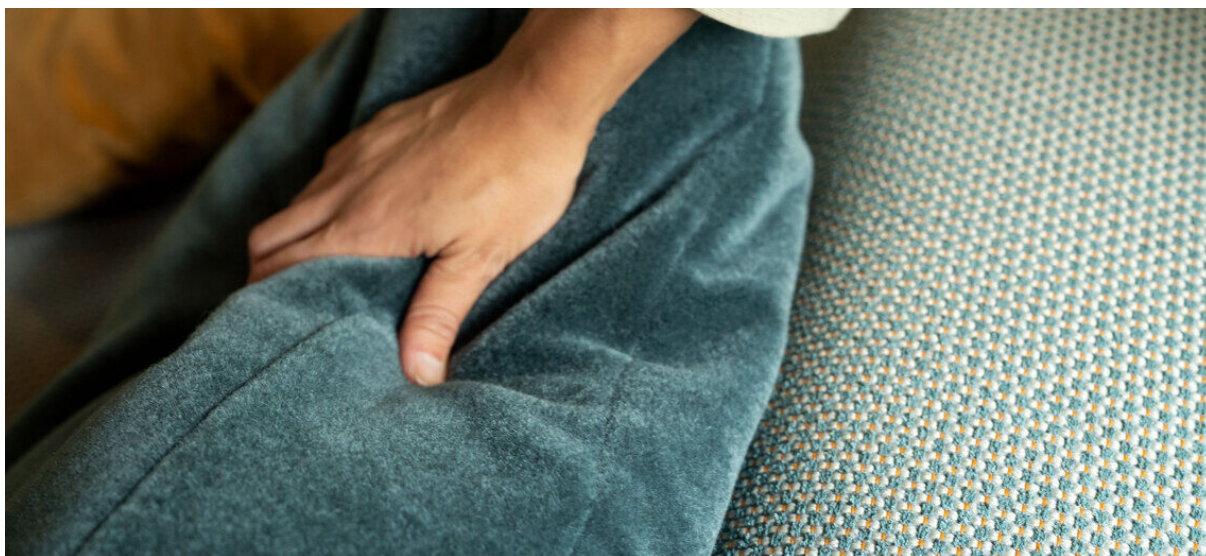


# monte

7073.01 – 7037.16



binder

**upholstery**

omschrijving

**Cradle to Cradle® Bronze-gecertificeerde duurzame mohair velours meubelstof met een extreem hoge pool in 16 matte kleuren**

samenstelling

**100% mohair (basis: katoen)**

breedte

**± 140 cm, ± 55 inches**

gewicht

**± 1215 gr/m<sup>1</sup>, ± 39 oz/yd<sup>1</sup> fabrics**

brandwerendheid

**EN 1021/1-2**

**BS 5852, crib 5**

**NF P 92 / 503 – 507, M2**

**DIN 4102, B2**

**UNI 9175, classe 1 IM**

**Cal TB 117**

**NFPA 260, class 1**

**IMO 2010 FTP part 8**

slijtvastheid

**ISO 12947-2**

45.000 rubs martindale

**ASTM D4157**

100.000 double rubs wyzenbeek

pilling

**ISO 12945-2**

4-5 (schaal 1-5)

**ASTM D3511**

5 (schaal 1-5)

wrijftechtheid

**ISO 105-X12**

nat 4-5 / droog 4-5 (schaal 1-5)

**AATCC 8**

nat 5 / droog 5 (schaal 1-5)

lichtechtheid

**ISO 105-B02**

5 (schaal 1-8)

**AATCC 16.3: 40 hours**

5 (schaal 1-5)

naadschuifweerstand

**ISO 13936-2**

ketting 4 mm / inslag 3 mm

**ASTM D4034**

warp 88 lbs / weft 126 lbs

treksterkte

**ISO 13934-1**

ketting 430 N / inslag 770 N

**ASTM D5034**

warp 83 lbs / weft 146 lbs

aanvullende informatie

**cradle to cradle bronze certified**

onderhoud



**dry clean only**



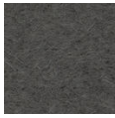
STANDARD  
100  
1207035  
Centexbel



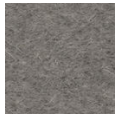
# monte

7073.01 – 7037.16

---



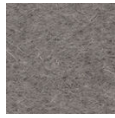
7073.01



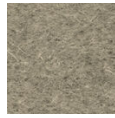
7073.02



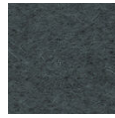
7073.03



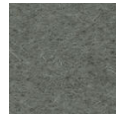
7073.04



7073.05



7073.06



7073.07



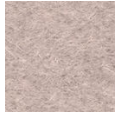
7073.08



7073.09



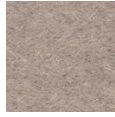
7073.10



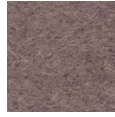
7073.11



7073.12



7073.13



7073.14



7073.15



7073.16