

moore

7075.01 – 7075.16



Kollektion

upholstery

Beschreibung

**Möbelstoff aus 100 Prozent
Post-Consumer-Recyclingmaterial, mit einem
grafischen Muster in 16 Farbkombinationen**

Zusammensetzung

100% recycled polyester FR

Breite

± 141 cm, ± 56 inches

Gewicht

± 835 gr/m¹, ± 27 oz/yd¹ fabrics

Brandschutzklasse

EN 1021/1-2

BS 5852, crib 5

NF P 92 / 503 – 507, M1

DIN 4102, B1

UNI 9175, classe 1 IM

Cal TB 117

NFPA 260, class 1

IMO 2010 FTP part 8

Abrieb

ISO 12947-2

70.000 rubs martindale

ASTM D4157

100.000 double rubs wyzenbeek

Pillingbildung

ISO 12945-2

4-5 (skala 1-5)

ASTM D3511

5 (skala 1-5)

Reibechtheit

ISO 105-X12

nass 4-5 / trocken 4-5 (skala 1-5)

AATCC 8

nass 5 / trocken 5 (skala 1-5)

Lichtechtheit

ISO 105-B02

6 (skala 1-8)

AATCC 16.3: 40 hours

4.5 (skala 1-5)

Nahtschiebewiderstand

ISO 13936-2

Kette 2 mm / Schuss 2 mm

ASTM D4034

warp 136 lbs / weft 126 lbs

Reißfestigkeit

ISO 13934-1

Kette 1790 N / Schuss 1760 N

ASTM D5034

warp 302 lbs / weft 296 lbs

Pflege



Schrumpfwerte: Kette -1.6% / Schuss -3%

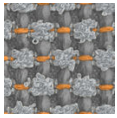


STANDARD
100

S21-3365
Hohenstein HTTI

moore

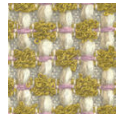
7075.01 – 7075.16



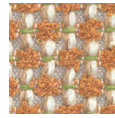
7075.01



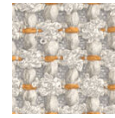
7075.02



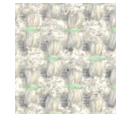
7075.03



7075.04



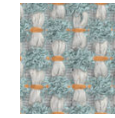
7075.05



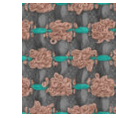
7075.06



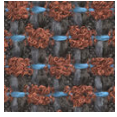
7075.07



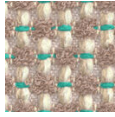
7075.08



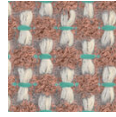
7075.09



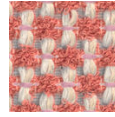
7075.10



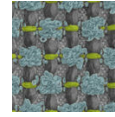
7075.11



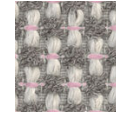
7075.12



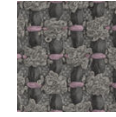
7075.13



7075.14



7075.15



7075.16