

moore

7075.01 – 7075.16



binder

upholstery

descrizione

un rivestimento in tessuto riciclato al 100% con una griglia grafica e tattile in una trama multicolore su larga scala in 16 colori

composizione

100% recycled polyester FR

altezza

± 141 cm, ± 56 inches

peso

± 835 gr/m¹, ± 27 oz/yd¹ fabrics

resistenza al fuoco

EN 1021/1-2

BS 5852, crib 5

NF P 92 / 503 – 507, M1

DIN 4102, B1

UNI 9175, classe 1 IM

Cal TB 117

NFPA 260, class 1

IMO 2010 FTP part 8

resistenza all'abrasione

ISO 12947-2

70.000 rubs martindale

ASTM D4157

100.000 double rubs wyzenbeek

resistenza al pilling

ISO 12945-2

4-5 (scala 1-5)

ASTM D3511

5 (scala 1-5)

solidità allo sfregamento

ISO 105-X12

bagnato 4-5 / asciutto 4-5 (scala 1-5)

AATCC 8

bagnato 5 / asciutto 5 (scala 1-5)

resistenza alla luce

ISO 105-B02

6 (scala 1-8)

AATCC 16.3: 40 hours

4.5 (scala 1-5)

resistenza al taglio cucitura

ISO 13936-2

catena 2 mm / trama 2 mm

ASTM D4034

warp 136 lbs / weft 126 lbs

resistenza alla trazione

ISO 13934-1

catena 1790 N / trama 1760 N

ASTM D5034

warp 302 lbs / weft 296 lbs

manutenzione



restringimento: catena -1.6% / trama -3%

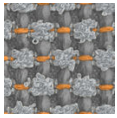


STANDARD
100

S21-3365
Hohenstein HTTI

moore

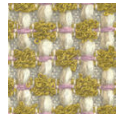
7075.01 – 7075.16



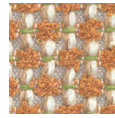
7075.01



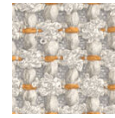
7075.02



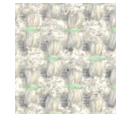
7075.03



7075.04



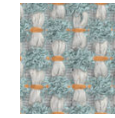
7075.05



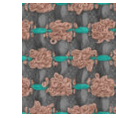
7075.06



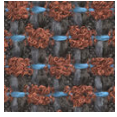
7075.07



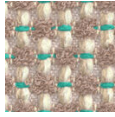
7075.08



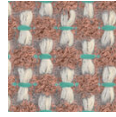
7075.09



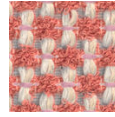
7075.10



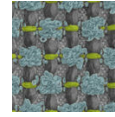
7075.11



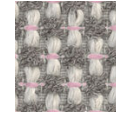
7075.12



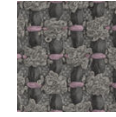
7075.13



7075.14



7075.15



7075.16