

moore

7075.01 – 7075.16



binder

upholstery

omschrijving

100% gerecyclede meubelstof met een tactiel, grafisch grid in een grof, veelkleurig weefsel in 16 kleuren

samenstelling

100% recycled polyester FR

breedte

± 141 cm, ± 56 inches

gewicht

± 835 gr/m¹, ± 27 oz/yd¹ fabrics

brandwerendheid

EN 1021/1-2

BS 5852, crib 5

NF P 92 / 503 – 507, M1

DIN 4102, B1

UNI 9175, classe 1 IM

Cal TB 117

NFPA 260, class 1

IMO 2010 FTP part 8

slijtvastheid

ISO 12947-2

70.000 rubs martindale

ASTM D4157

100.000 double rubs wyzenbeek

pilling

ISO 12945-2

4-5 (schaal 1-5)

ASTM D3511

5 (schaal 1-5)

wrijftechtheid

ISO 105-X12

nat 4-5 / droog 4-5 (schaal 1-5)

AATCC 8

nat 5 / droog 5 (schaal 1-5)

lichtechtheid

ISO 105-B02

6 (schaal 1-8)

AATCC 16.3: 40 hours

4.5 (schaal 1-5)

naadschuifweerstand

ISO 13936-2

ketting 2 mm / inslag 2 mm

ASTM D4034

warp 136 lbs / weft 126 lbs

treksterkte

ISO 13934-1

ketting 1790 N / inslag 1760 N

ASTM D5034

warp 302 lbs / weft 296 lbs

onderhoud



krimp: ketting -1.6% / inslag -3%

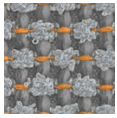


STANDARD
100

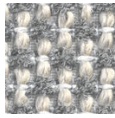
S21-3365
Hohenstein HTTI

moore

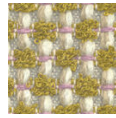
7075.01 – 7075.16



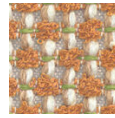
7075.01



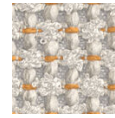
7075.02



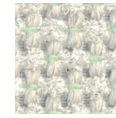
7075.03



7075.04



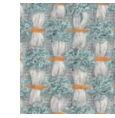
7075.05



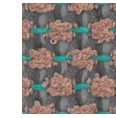
7075.06



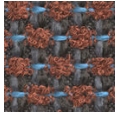
7075.07



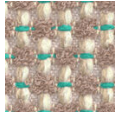
7075.08



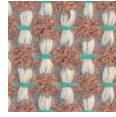
7075.09



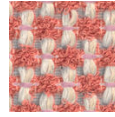
7075.10



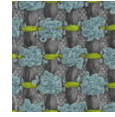
7075.11



7075.12



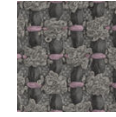
7075.13



7075.14



7075.15



7075.16