

moore

7075.01 – 7075.16



binder

upholstery

描述

多色编织网格状设计的100%再生材质家具面料

组成

100% recycled polyester FR

宽度

± 141 cm, ± 56 inches

重量

± 835 gr/m², ± 27 oz/yd² fabrics

阻燃

EN 1021/1-2

BS 5852, crib 5

NF P 92 / 503 — 507, M1

DIN 4102, B1

UNI 9175, classe 1 IM

Cal TB 117

NFPA 260, class 1

IMO 2010 FTP part 8

耐磨性

ISO 12947-2

70,000 rubs martindale

ASTM D4157

100,000 double rubs wyzenbeek

起毛

ISO 12945-2

4-5 (由 1-5)

ASTM D3511

5 (由 1-5)

耐擦拭

ISO 105-X12

湿 4-5 / 干 4-5 (由 1-5)

AATCC 8

湿 5 / 干 5 (由 1-5)

耐褪色

ISO 105-B02

6 (由 1-8)

AATCC 16.3: 40 hours

4.5 (由 1-5)

耐滑缝

ISO 13936-2

纵向收缩比 2 mm / 横向收缩比 2 mm

ASTM D4034

warp 136 lbs / weft 126 lbs

屈伸强度

ISO 13934-1

纵向收缩比 1790 N / 横向收缩比 1760 N

ASTM D5034

warp 302 lbs / weft 296 lbs



收缩□ : 纵向收缩比 -1.6% / 横向收缩比 -3%

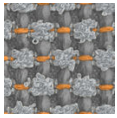


STANDARD
100

S21-3365
Hohenstein HTTI

moore

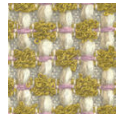
7075.01 – 7075.16



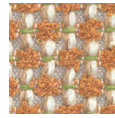
7075.01



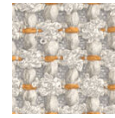
7075.02



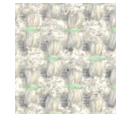
7075.03



7075.04



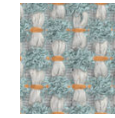
7075.05



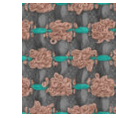
7075.06



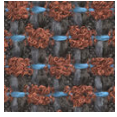
7075.07



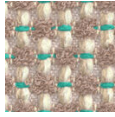
7075.08



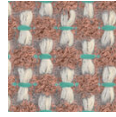
7075.09



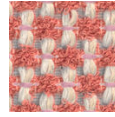
7075.10



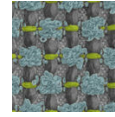
7075.11



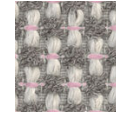
7075.12



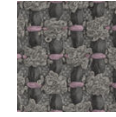
7075.13



7075.14



7075.15



7075.16