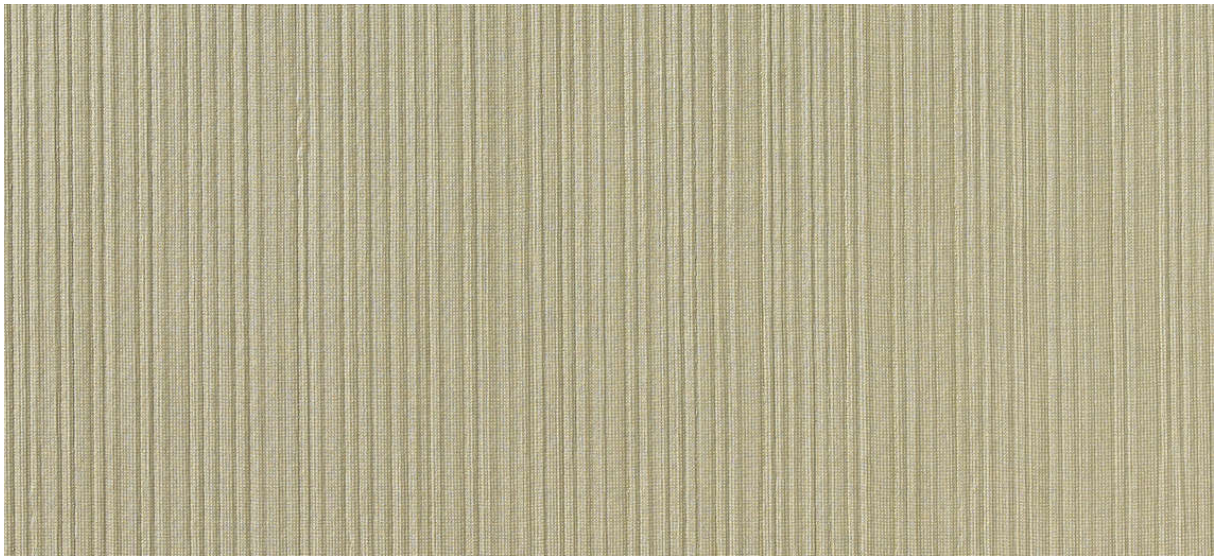


seneca

1016.01 - 1016.18



colección

**wallcovering
vinyl**

descripción

estructura longitudinal textil

composición

**capa vinílica estampada con tintas al agua,
sobre soporte de algodón**

ancho

± 130 cm, ± 51/52 inches

peso

± 350 gr/m², ± 15 oz/yd¹

absorción del ruido

ISO 354, alphaw 0.10

combustión retardada

EN 13501, B s1 d0

ASTM E84, A

permeabilidad al vapor de agua

ISO 15106-3 / EN ISO 12572

Sd value ± 9 m



vinyl COMMITTED TO
SUSTAINABLE DEVELOPMENT

CE EN 15102



seneca

1016.01 - 1016.18



1016.17



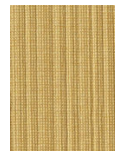
1016.12



1016.01



1016.04



1016.15



1016.07



1016.05



1016.08



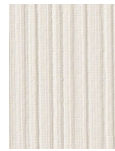
1016.06



1016.18



1016.03



1016.02



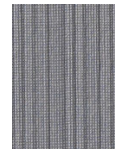
1016.11



1016.10



1016.14



1016.13



1016.16



1016.09