

silhouette embroider

2531.01 - 2531.06



collection

**wallcovering
textile
xorel**

description

**classical chequered pattern built up from
snaking embroidered yarns**

composition

**100% xorel (polyethylene) (85% biobased
PE, 15% PE)**

width

± 132 cm, ± 52 inches

weight

± 286 gr/m², ± 12 oz/yd¹

pattern repeat

height: 24 cm, 9.5 inches

width: 24 cm, 9.5 inches

flame retardancy

EN 13501, B s1 d2

ASTM E84, A

water vapor permeability

ISO 15106-3 / EN ISO 12572

Sd value <0,5 m

additional information

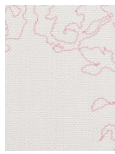
cradle to cradle gold certified

**Xorel is a registered trademark and license
to distribute is granted by permission of
Carnegie Fabrics Inc. US**

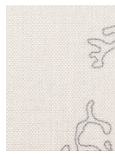


silhouette embroider

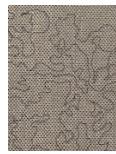
2531.01 - 2531.06



2531.01



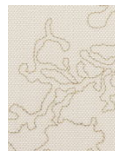
2531.02



2531.03



2531.04



2531.05