

silhouette embroider

2531.01 - 2531.06



colección
wallcovering
textile
xorel

descripción
clásicos rombos confeccionados con hilos
serpenteantes bordados

composición
100% xorel (polietileno) (85% biobased PE,
15% PE)

ancho
± 132 cm, ± 52 inches

peso
± 286 gr/m², ± 12 oz/yd¹

patrón repetición
altura: 24 cm, 9.5 inches
anchura: 24 cm, 9.5 inches

combustión retardada
EN 13501, B s1 d2
ASTM E84, A

permeabilidad al vapor de agua
ISO 15106-3 / EN ISO 12572
Sd value <0,5 m

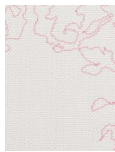
información adicional
cradle to cradle gold certified

Xorel is a registered trademark and license
to distribute is granted by permission of
Carnegie Fabrics Inc. US

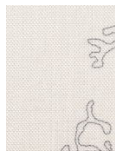


silhouette embroider

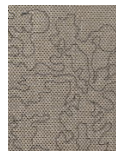
2531.01 - 2531.06



2531.01



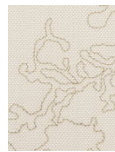
2531.02



2531.03



2531.04



2531.05