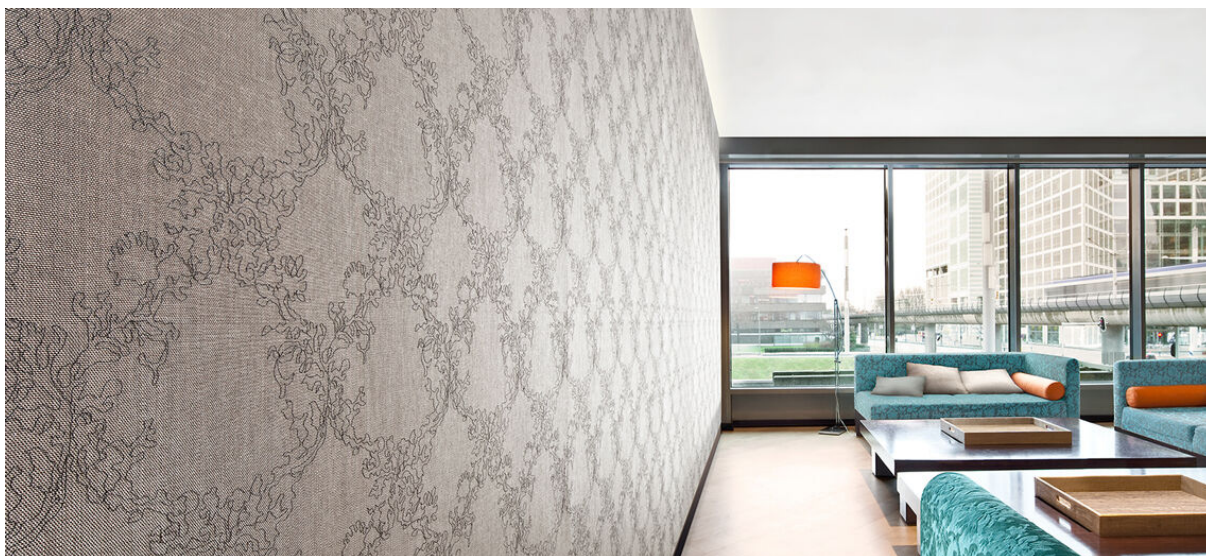


# silhouette embroider

2531.01 - 2531.06



collezione  
**wallcovering**  
**textile**  
**xorel**

descrizione  
**quadrato classico costruito da fili intrecciati ricamati**

composizione  
**100% xorel (polietilene) (85% biobased PE, 15% PE)**

altezza  
**± 132 cm, ± 52 inches**

peso  
**± 286 gr/m<sup>2</sup>, ± 12 oz/yd<sup>1</sup>**

rapporto  
**verticale: 24 cm, 9.5 inches**  
**orizzontale: 24 cm, 9.5 inches**

resistenza al fuoco  
**EN 13501, B s1 d2**  
**ASTM E84, A**

permeabilità al vapore acqueo  
**ISO 15106-3 / EN ISO 12572**  
Sd value <0,5 m

informazioni supplementari  
**cradle to cradle gold certified**

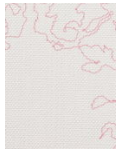
**Xorel is a registered trademark and license to distribute is granted by permission of Carnegie Fabrics Inc. US**



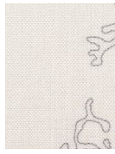
# silhouette embroider

2531.01 - 2531.06

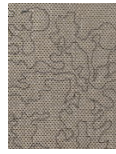
---



2531.01



2531.02



2531.03



2531.04



2531.05