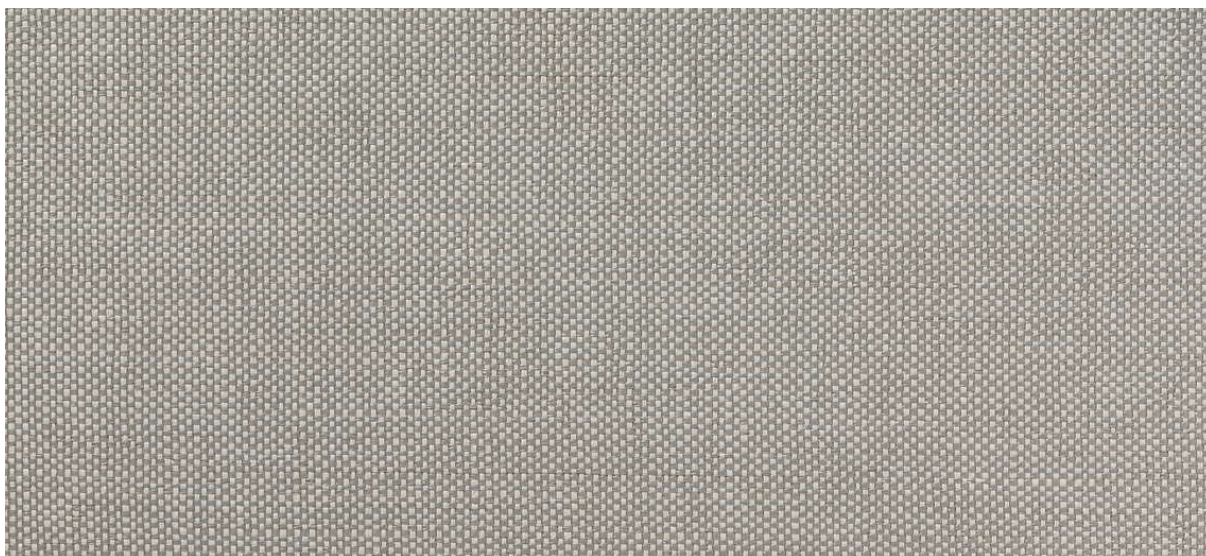


# strie

2532.01 - 2532.34



collection

**wallcovering**  
**textile**  
**xorel**

description

**(semi) uni smooth fabric**

composition

**100% xorel (polyethylene) (85% biobased  
PE, 15% PE)**

width

**± 132 cm, ± 52 inches**

weight

**± 340 gr/m<sup>2</sup>, ± 15 oz/yd<sup>1</sup>**

flame retardancy

**EN 13501, B s1 d2**  
**ASTM E84, A**

water vapor permeability

**ISO 15106-3 / EN ISO 12572**

Sd value <0,5 m

additional information

**cradle to cradle gold certified**

**Xorel is a registered trademark and license  
to distribute is granted by permission of  
Carnegie Fabrics Inc. US**



# strie

2532.01 - 2532.34

---



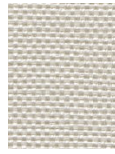
2532.32



2532.27



2532.11



2532.24



2532.26



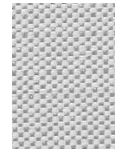
2532.12



2532.21



2532.15



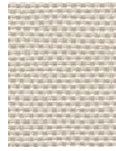
2532.28



2532.31



2532.25



2532.07



2532.16



2532.09



2532.13



2532.29



2532.19



2532.10



2532.30



2532.22