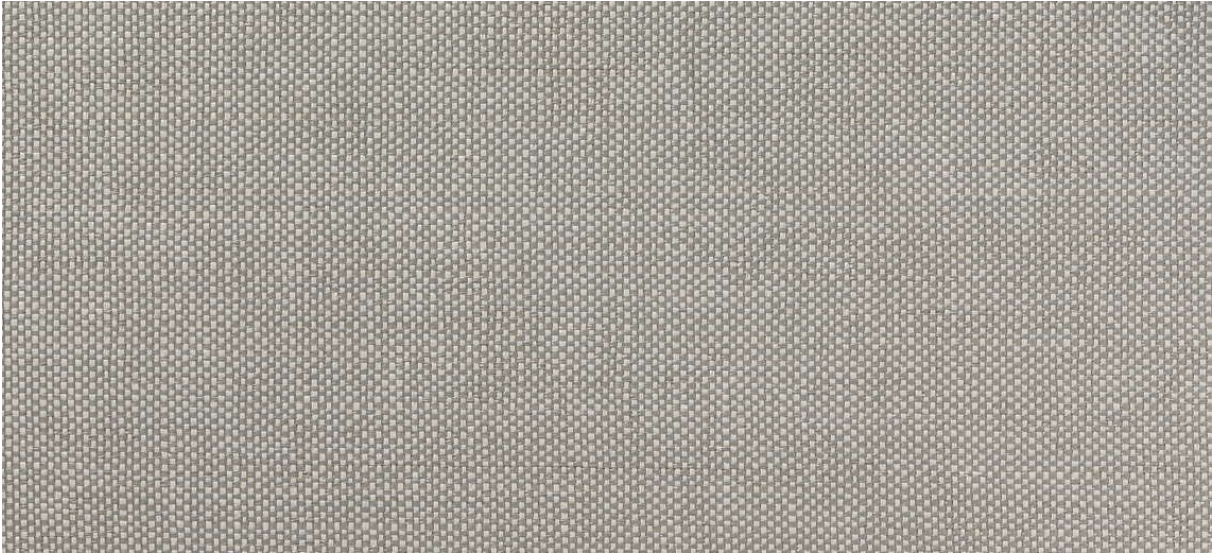


strie

2532.01 - 2532.34



colección

**wallcovering
textile
xorel**

descripción

tejido plano (semi-)liso

composición

**100% xorel (polietileno) (85% biobased PE,
15% PE)**

ancho

± 132 cm, ± 52 inches

peso

± 340 gr/m², ± 15 oz/yd¹

combustión retardada

**EN 13501, B s1 d2
ASTM E84, A**

permeabilidad al vapor de agua

ISO 15106-3 / EN ISO 12572

Sd value <0,5 m

información adicional

cradle to cradle gold certified

**Xorel is a registered trademark and license
to distribute is granted by permission of
Carnegie Fabrics Inc. US**



strie

2532.01 - 2532.34



2532.32



2532.27



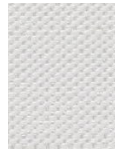
2532.11



2532.24



2532.26



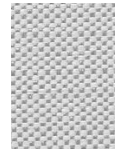
2532.12



2532.21



2532.15



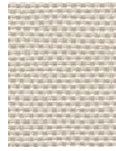
2532.28



2532.31



2532.25



2532.07



2532.16



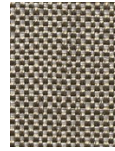
2532.09



2532.13



2532.29



2532.19



2532.10



2532.30



2532.22