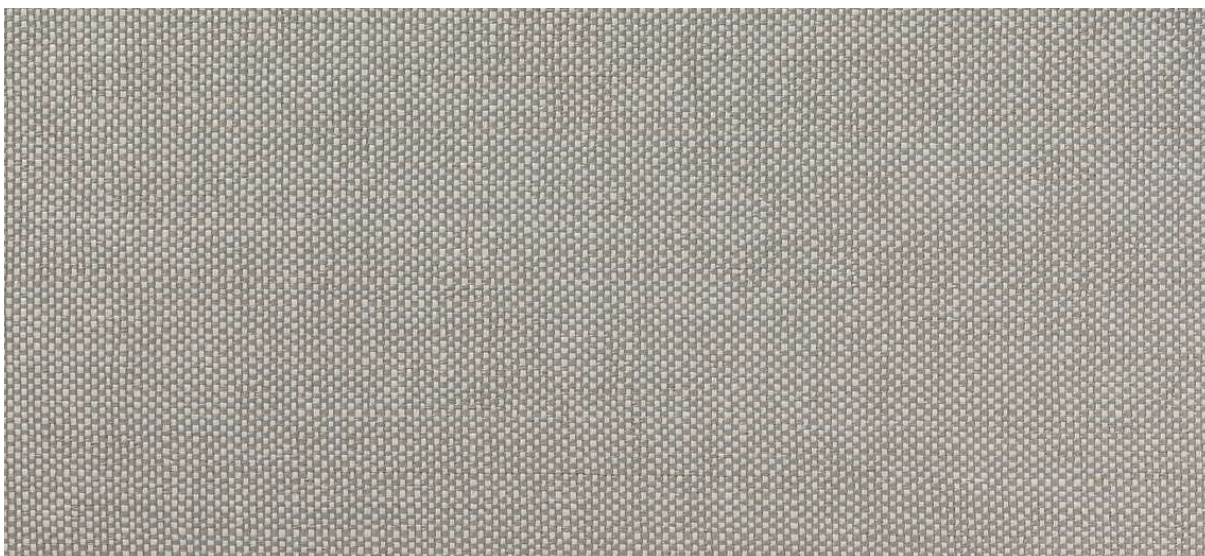


strie

2532.01 - 2532.34



collection

**wallcovering
textile
xorel**

description

tissu plat (semi-)uni

composition

**100% xorel (polyéthylène) (85% biobased
PE, 15% PE)**

largeur

± 132 cm, ± 52 inches

poids

± 340 gr/m², ± 15 oz/yd¹

non feu

**EN 13501, B s1 d2
ASTM E84, A**

perméabilité à la vapeur d'eau

ISO 15106-3 / EN ISO 12572

Sd value <0,5 m

informations complémentaires

cradle to cradle gold certified

**Xorel is a registered trademark and license
to distribute is granted by permission of
Carnegie Fabrics Inc. US**



strie

2532.01 - 2532.34



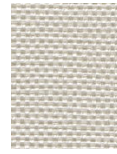
2532.32



2532.27



2532.11



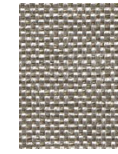
2532.24



2532.26



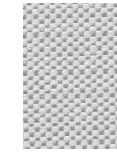
2532.12



2532.21



2532.15



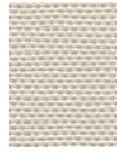
2532.28



2532.31



2532.25



2532.07



2532.16



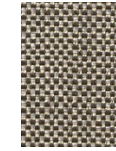
2532.09



2532.13



2532.29



2532.19



2532.10



2532.30



2532.22