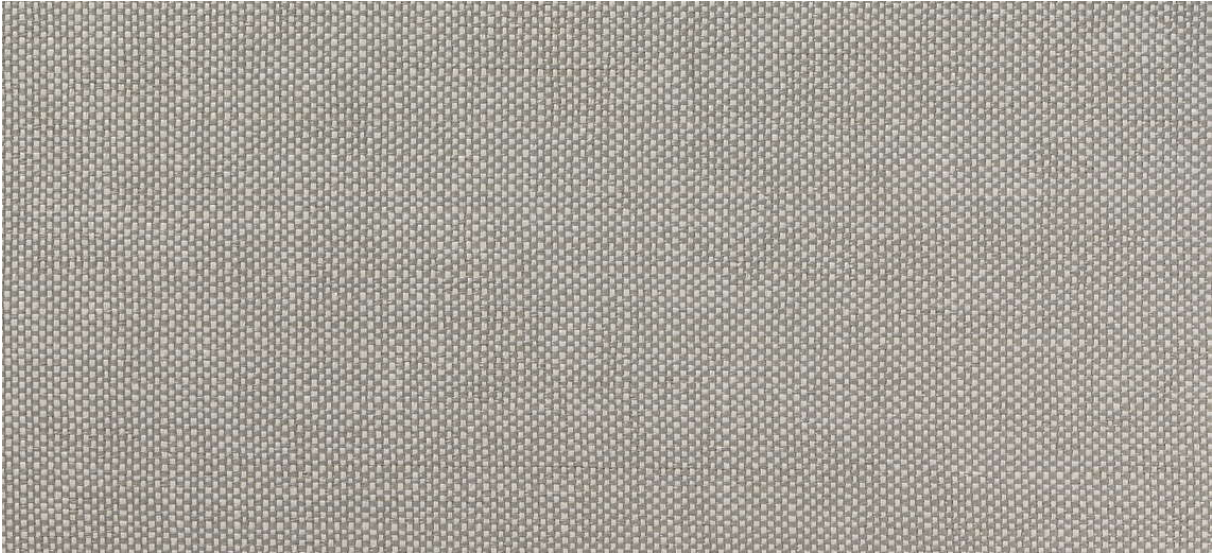


strie

2532.01 - 2532.34



系列

wallcovering
textile
xorel

描述

(半) 统一光滑面料

组成

100% xorel (聚乙烯) (85% biobased PE, 15% PE)

宽度

± 132 cm, ± 52 inches

重量

± 340 gr/m², ± 15 oz/yd¹

阻燃

EN 13501, B s1 d2

ASTM E84, A

水蒸气渗透性

ISO 15106-3 / EN ISO 12572

Sd value < 0,5 m

额外信息

cradle to cradle gold certified

Xorel is a registered trademark and license to distribute is granted by permission of Carnegie Fabrics Inc. US



strie

2532.01 - 2532.34



2532.32



2532.27



2532.11



2532.24



2532.26



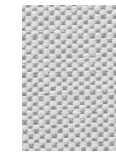
2532.12



2532.21



2532.15



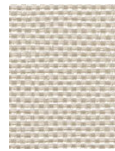
2532.28



2532.31



2532.25



2532.07



2532.16



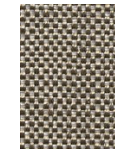
2532.09



2532.13



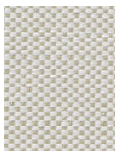
2532.29



2532.19



2532.10



2532.30



2532.22