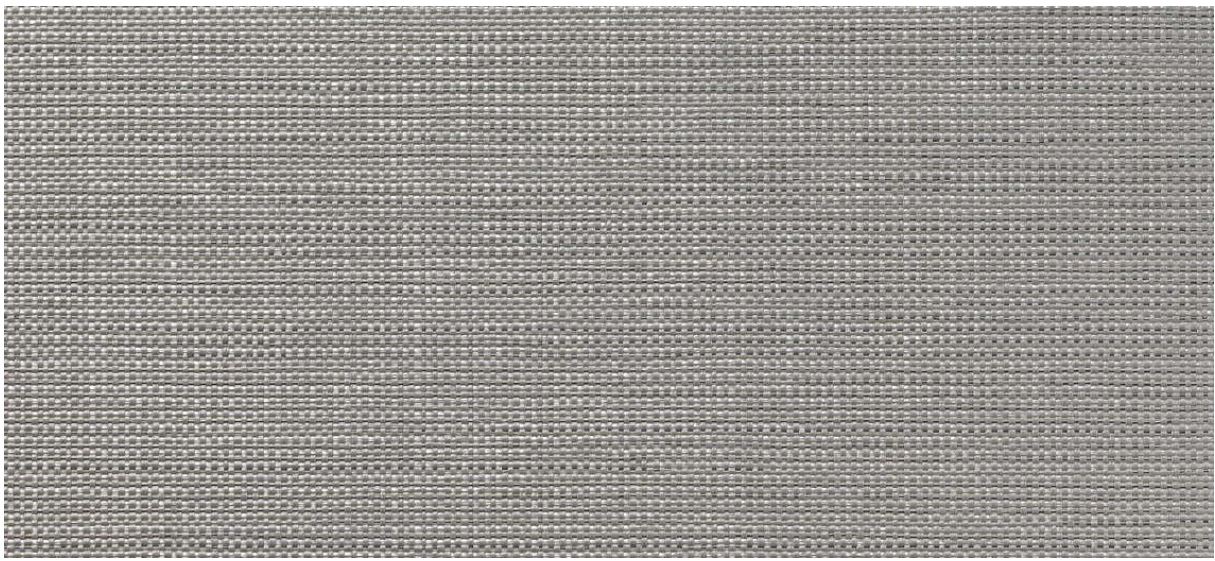


dash

2533.01 - 2533.18



collezione
wallcovering
textile
xorel

descrizione
tessuto a trama tela semi-uni multicolore

composizione
**100% xorel (polietilene) (65% biobased PE,
35% PE)**

altezza
± 132 cm, ± 52 inches

peso
± 360 gr/m², ± 15 oz/yd¹

resistenza al fuoco
EN 13501, B s1 d2
ASTM E84, A

permeabilità al vapore acqueo
ISO 15106-3 / EN ISO 12572
Sd value <0,5 m

informazioni supplementari
cradle to cradle gold certified

**Xorel is a registered trademark and license
to distribute is granted by permission of
Carnegie Fabrics Inc. US**



dash

2533.01 - 2533.18



2533.02



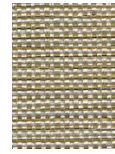
2533.03



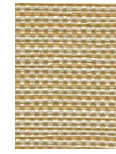
2533.01



2533.17



2533.07



2533.10



2533.11



2533.09



2533.15



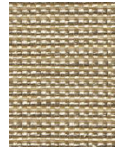
2533.06



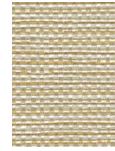
2533.14



2533.04



2533.16



2533.13



2533.12



2533.08



2533.05



2533.18