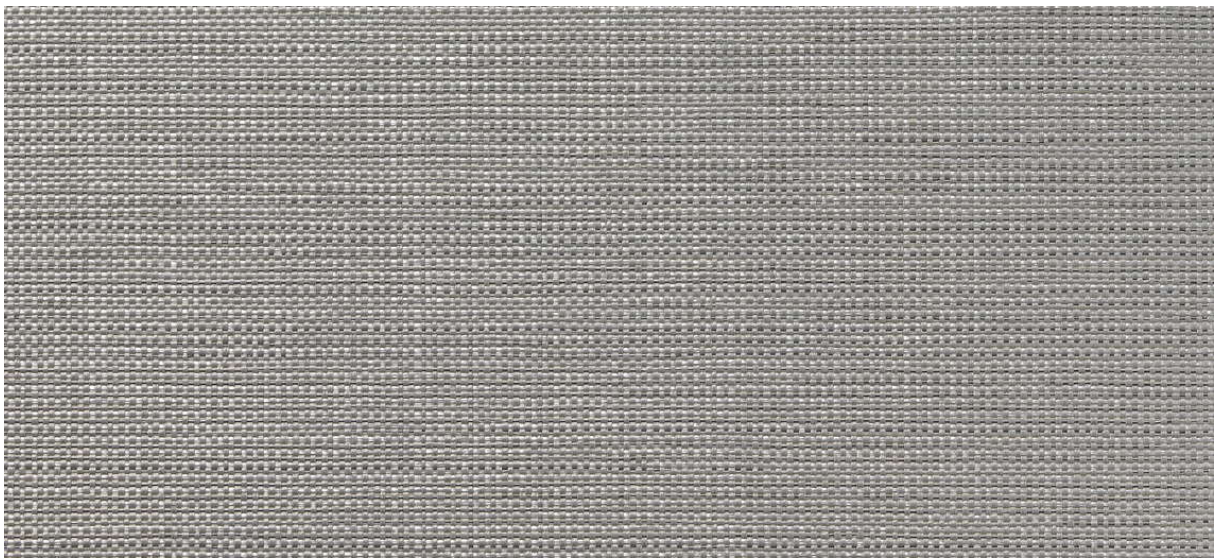


dash

2533.01 - 2533.18



kolekcji
wallcovering
textile
xorel

opis
półjednorodna wielokolorowa tkanina
pleciona

skład
100% xorel (polietylen) (65% biobased PE,
35% PE)

szerokość
± 132 cm, ± 52 inches

gramatura
± 360 gr/m², ± 15 oz/yd¹

odporność ogniowa
EN 13501, B s1 d2
ASTM E84, A

przepuszczalność pary wodnej
ISO 15106-3 / EN ISO 12572
Sd value <0,5 m

dodatkowe informacje
cradle to cradle gold certified

Xorel is a registered trademark and license
to distribute is granted by permission of
Carnegie Fabrics Inc. US



dash

2533.01 - 2533.18



2533.02



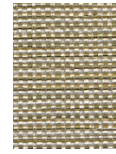
2533.03



2533.01



2533.17



2533.07



2533.10



2533.11



2533.09



2533.15



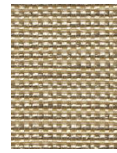
2533.06



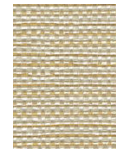
2533.14



2533.04



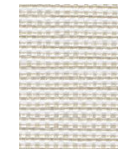
2533.16



2533.13



2533.12



2533.08



2533.05



2533.18