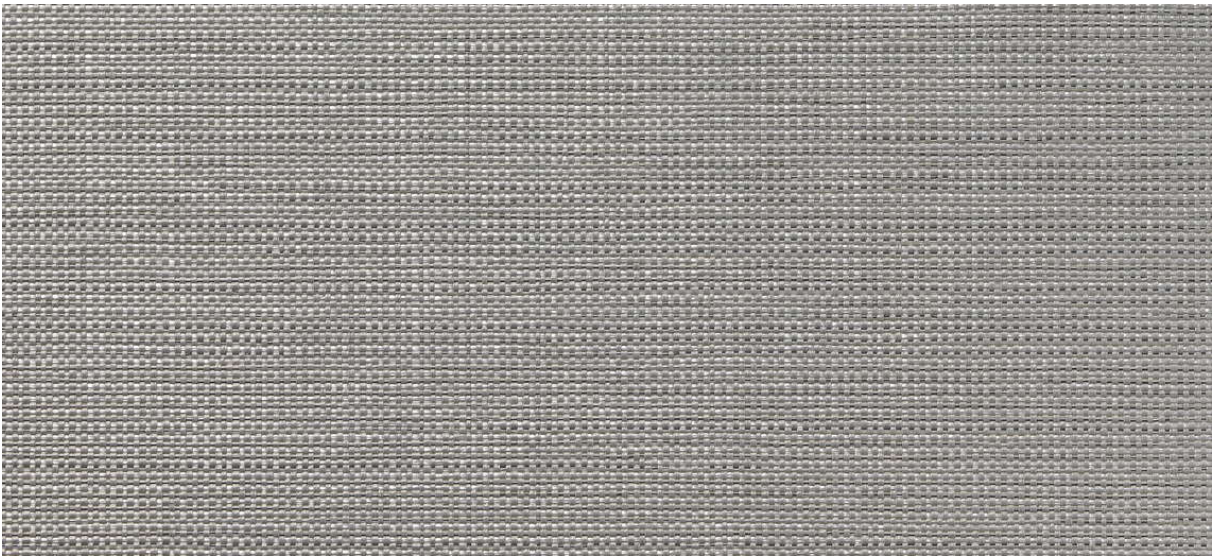


dash

2533.01 - 2533.18



系列

wallcovering
textile
xorel

描述

半单向五彩光滑面料

组成

100% xorel (聚乙烯) (65% biobased PE, 35% PE)

宽度

± 132 cm, ± 52 inches

重量

± 360 gr/m², ± 15 oz/yd¹

阻燃

EN 13501, B s1 d2

ASTM E84, A

水蒸气渗透性

ISO 15106-3 / EN ISO 12572

Sd value <0,5 m

额外信息

cradle to cradle gold certified

Xorel is a registered trademark and license to distribute is granted by permission of Carnegie Fabrics Inc. US



dash

2533.01 - 2533.18



2533.02



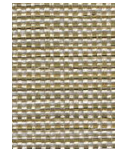
2533.03



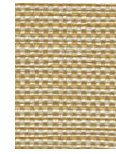
2533.01



2533.17



2533.07



2533.10



2533.11



2533.09



2533.15



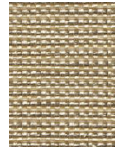
2533.06



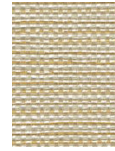
2533.14



2533.04



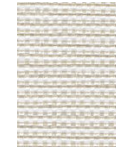
2533.16



2533.13



2533.12



2533.08



2533.05



2533.18