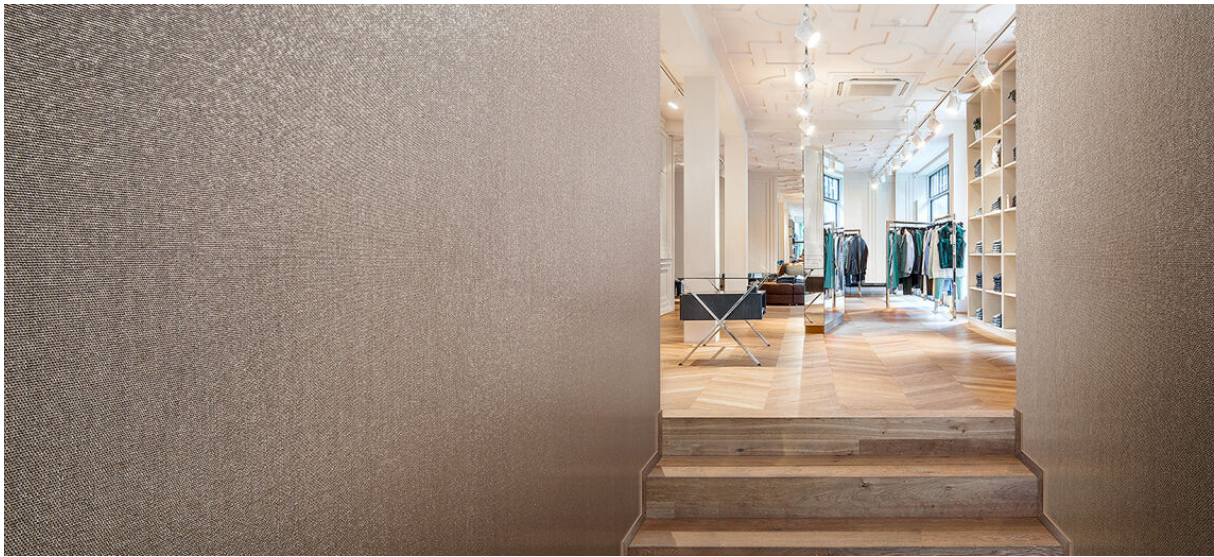


nexus

2534.01 - 2534.17



collection

**wallcovering
textile
xorel**

description

(semi-)uni smooth fabric with irregular weft

composition

**100% xorel (polyethylene) (85% biobased
PE, 15% PE)**

width

± 132 cm, ± 52 inches

weight

± 420 gr/m², ± 18 oz/yd¹

flame retardancy

**EN 13501, B s1 d2
ASTM E84, A**

water vapor permeability

ISO 15106-3 / EN ISO 12572

Sd value <0,5 m

additional information

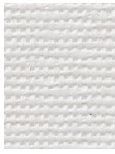
cradle to cradle gold certified

**Xorel is a registered trademark and license
to distribute is granted by permission of
Carnegie Fabrics Inc. US**



nexus

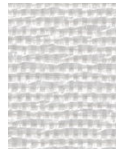
2534.01 - 2534.17



2534.01



2534.02



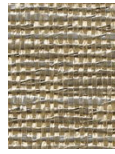
2534.03



2534.08



2534.16



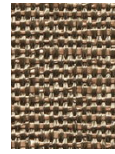
2534.14



2534.09



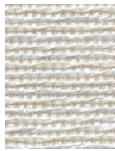
2534.06



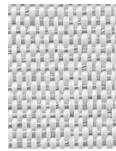
2534.17



2534.04



2534.05



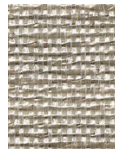
2534.07



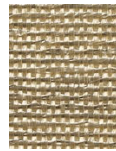
2534.10



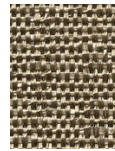
2534.13



2534.11



2534.12



2534.15