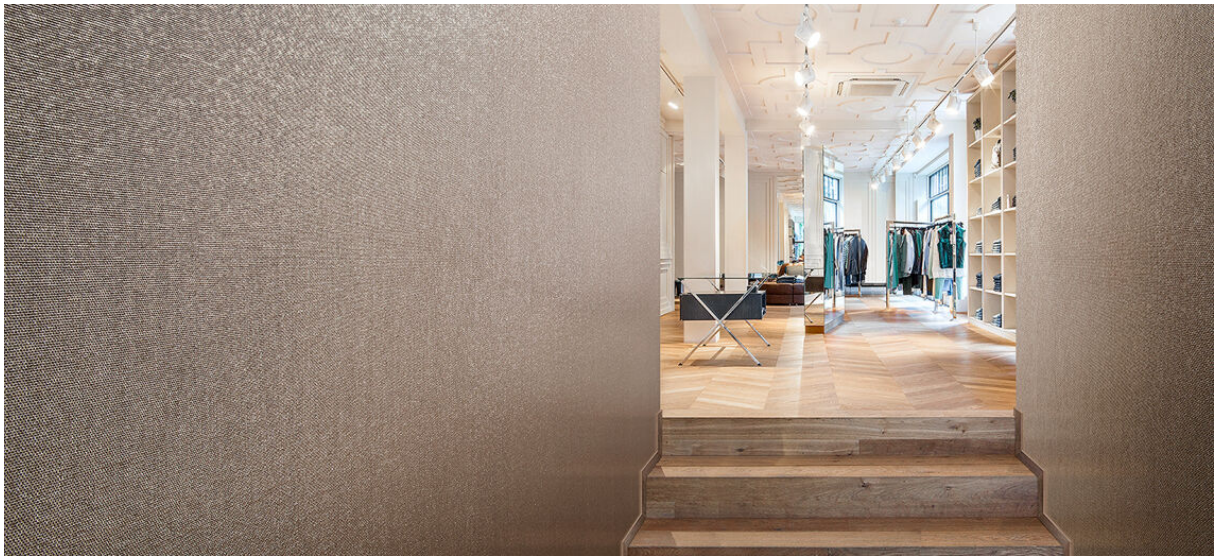


# nexus

2534.01 - 2534.17



collectie  
**wallcovering**  
**textile**  
**xorel**

omschrijving  
**(semi-)uni platweefsel met onregelmatige inslag**

samenstelling  
**100% xorel (polyethyleen) (85% biobased PE, 15% PE)**

breedte  
**± 132 cm, ± 52 inches**

gewicht  
**± 420 gr/m<sup>2</sup>, ± 18 oz/yd<sup>1</sup>**

brandwerendheid  
**EN 13501, B s1 d2**  
**ASTM E84, A**

waterdampdoorlaatbaarheid  
**ISO 15106-3 / EN ISO 12572**  
Sd waarde <0,5 m

aanvullende informatie  
**cradle to cradle gold certified**

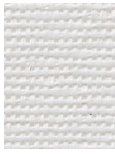
**Xorel is a registered trademark and license to distribute is granted by permission of Carnegie Fabrics Inc. US**



# nexus

2534.01 - 2534.17

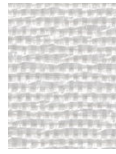
---



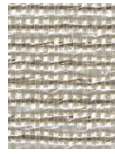
2534.01



2534.02



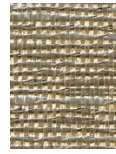
2534.03



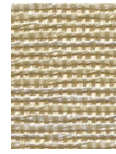
2534.08



2534.16



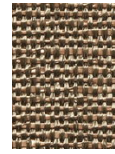
2534.14



2534.09



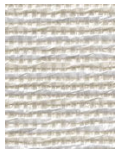
2534.06



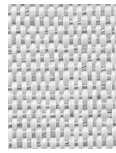
2534.17



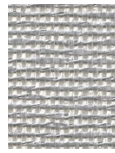
2534.04



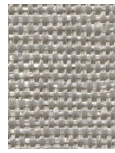
2534.05



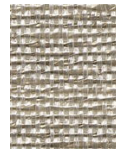
2534.07



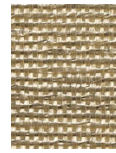
2534.10



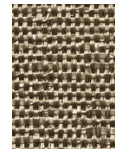
2534.13



2534.11



2534.12



2534.15