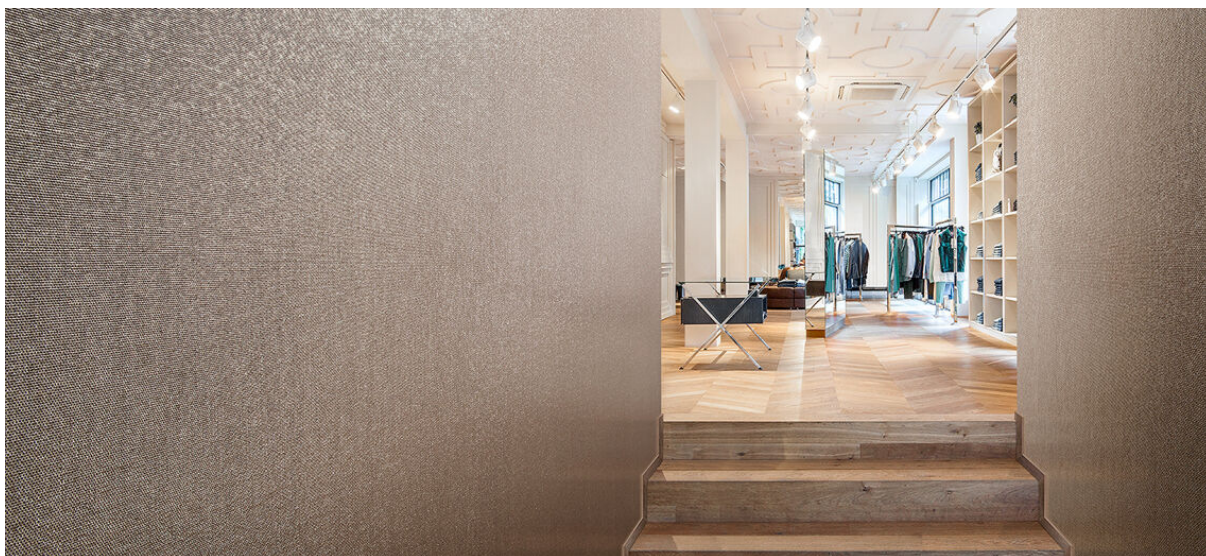


nexus

2534.01 - 2534.17



kolekcji
wallcovering
textile
xorel

opis
(pół)jednorodna tkanina pleciona o nieregularnym wążku

skład
100% xorel (polietylen) (85% biobased PE, 15% PE)

szerokość
± 132 cm, ± 52 inches

gramatura
± 420 gr/m², ± 18 oz/yd¹

odporność ogniowa
EN 13501, B s1 d2
ASTM E84, A

przepuszczalność pary wodnej
ISO 15106-3 / EN ISO 12572
Sd value <0,5 m

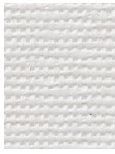
dodatkowe informacje
cradle to cradle gold certified

Xorel is a registered trademark and license to distribute is granted by permission of Carnegie Fabrics Inc. US



nexus

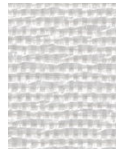
2534.01 - 2534.17



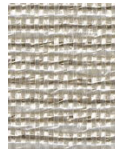
2534.01



2534.02



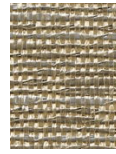
2534.03



2534.08



2534.16



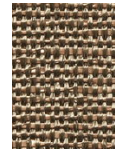
2534.14



2534.09



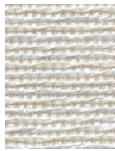
2534.06



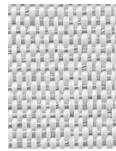
2534.17



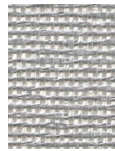
2534.04



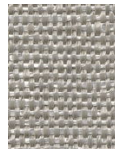
2534.05



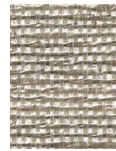
2534.07



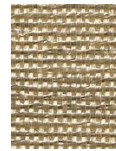
2534.10



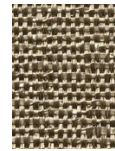
2534.13



2534.11



2534.12



2534.15