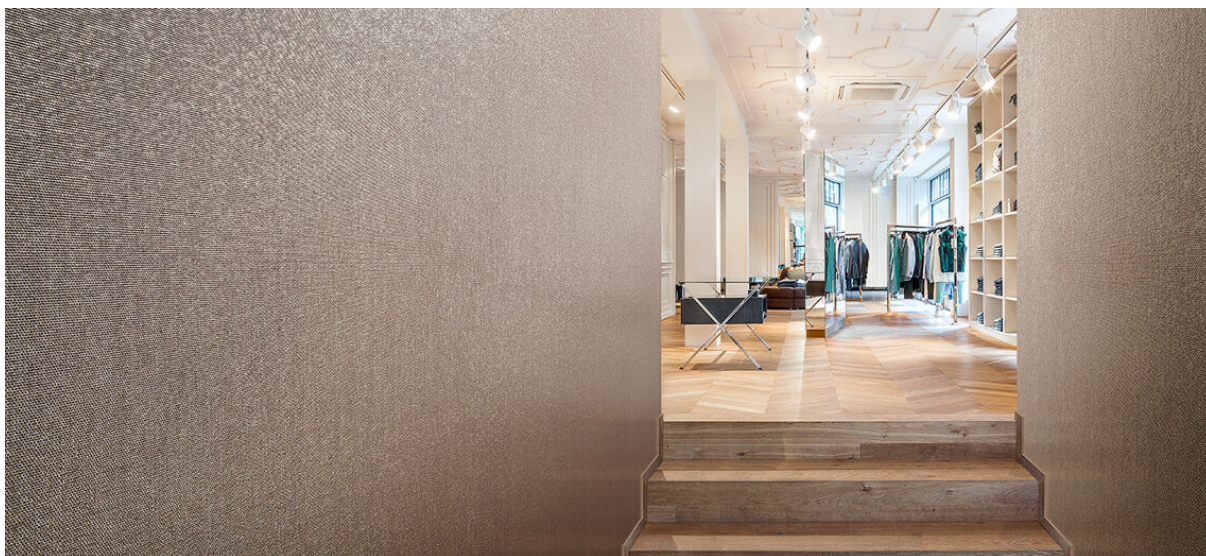


nexus

2534.01 - 2534.17



coleção
wallcovering
textile
xorel

descrição
tecido plano (semi)liso com trama irregular

composição
**100% xorel (polietileno) (85% biobased PE,
15% PE)**

largura
± 132 cm, ± 52 inches

gramagem
± 420 gr/m², ± 18 oz/yd¹

resistência ao fogo
EN 13501, B s1 d2
ASTM E84, A

permeabilidade ao vapor de água
ISO 15106-3 / EN ISO 12572
Sd value <0,5 m

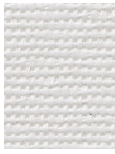
informações complementares
cradle to cradle gold certified

**Xorel is a registered trademark and license
to distribute is granted by permission of
Carnegie Fabrics Inc. US**



nexus

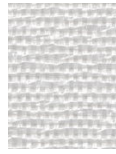
2534.01 - 2534.17



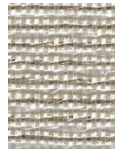
2534.01



2534.02



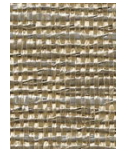
2534.03



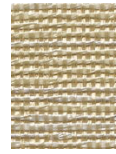
2534.08



2534.16



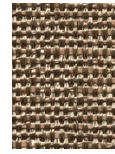
2534.14



2534.09



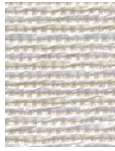
2534.06



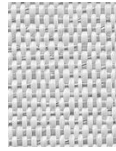
2534.17



2534.04



2534.05



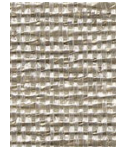
2534.07



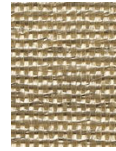
2534.10



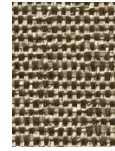
2534.13



2534.11



2534.12



2534.15