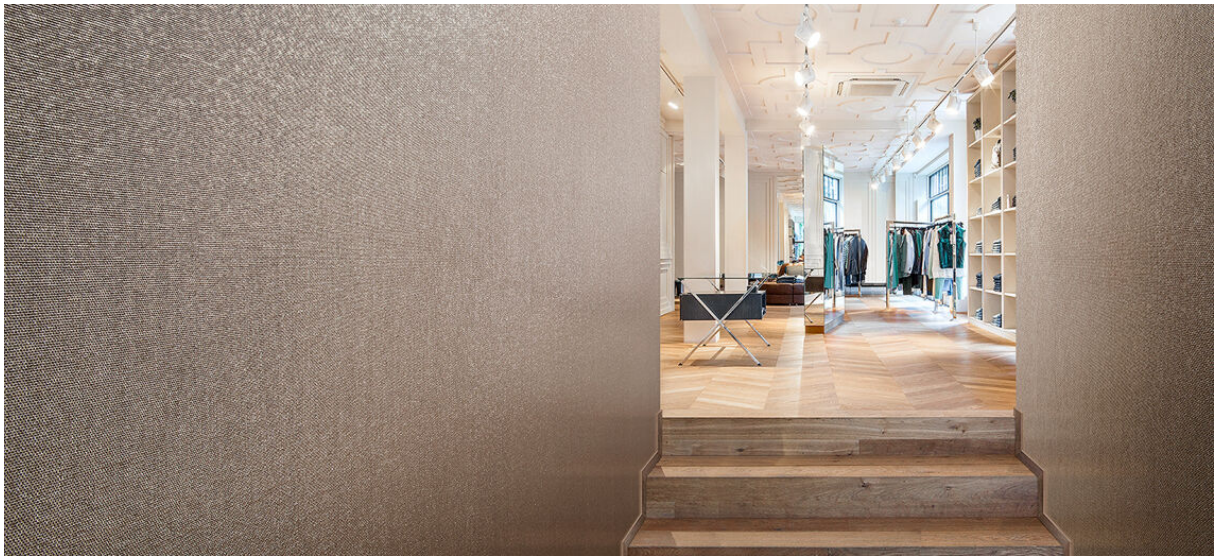


nexus

2534.01 - 2534.17



系列

wallcovering
textile
xorel

描述

不规则纬线组成的（半）统一光滑面料

组成

100% xorel (聚乙烯) (85% biobased PE, 15% PE)

宽度

± 132 cm, ± 52 inches

重量

± 420 gr/m², ± 18 oz/yd¹

阻燃

EN 13501, B s1 d2

ASTM E84, A

水蒸气渗透性

ISO 15106-3 / EN ISO 12572

Sd value <0,5 m

额外信息

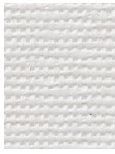
cradle to cradle gold certified

Xorel is a registered trademark and license to distribute is granted by permission of Carnegie Fabrics Inc. US



nexus

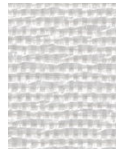
2534.01 - 2534.17



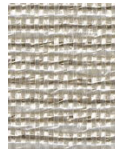
2534.01



2534.02



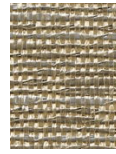
2534.03



2534.08



2534.16



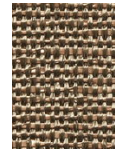
2534.14



2534.09



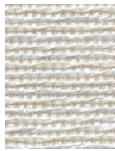
2534.06



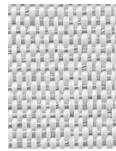
2534.17



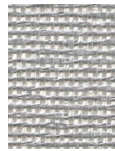
2534.04



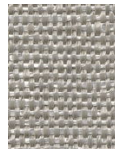
2534.05



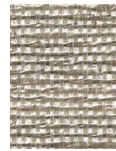
2534.07



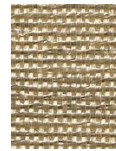
2534.10



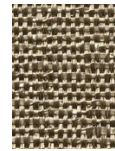
2534.13



2534.11



2534.12



2534.15