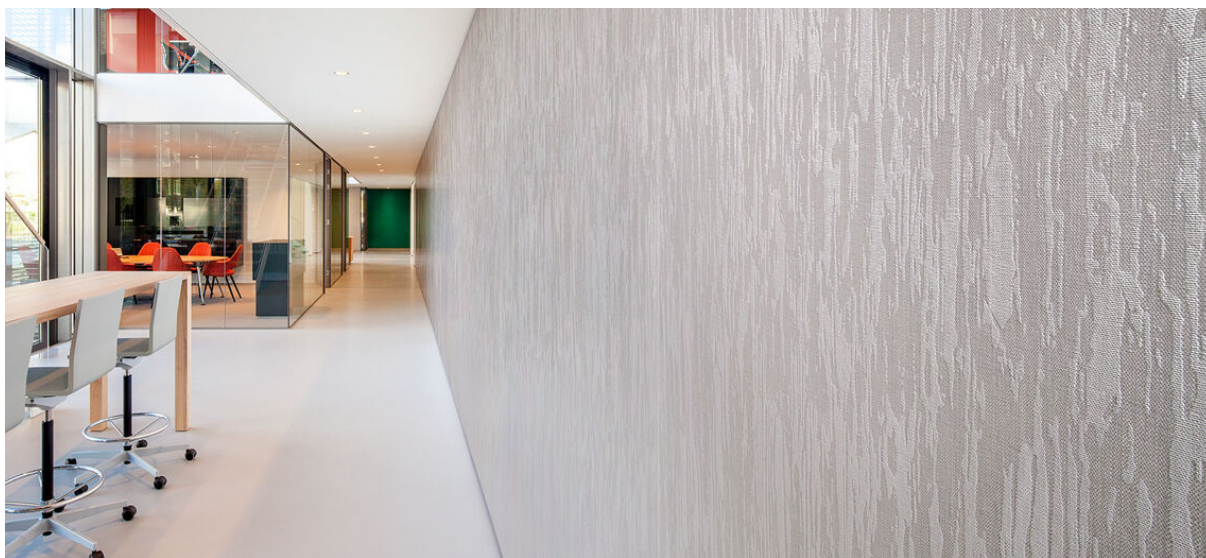


veneer emboss

2535.01 - 2535.08



collection

wallcovering
textile
xorel

description

weave with a bark design

composition

100% xorel (polyethylene) (85% biobased PE, 15% PE)

width

± 132 cm, ± 52 inches

weight

± 340 gr/m², ± 14 oz/yd¹

pattern repeat

height: 61 cm, 24 inches

width: 68.5 cm, 27 inches

flame retardancy

EN 13501, B s1 d2

ASTM E84, A

water vapor permeability

ISO 15106-3 / EN ISO 12572

Sd value <0,5 m

additional information

cradle to cradle gold certified

Xorel is a registered trademark and license to distribute is granted by permission of Carnegie Fabrics Inc. US

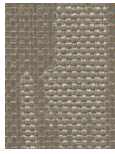


veneer emboss

2535.01 - 2535.08



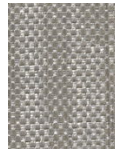
2535.07



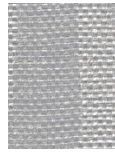
2535.08



2535.01



2535.02



2535.05



2535.03