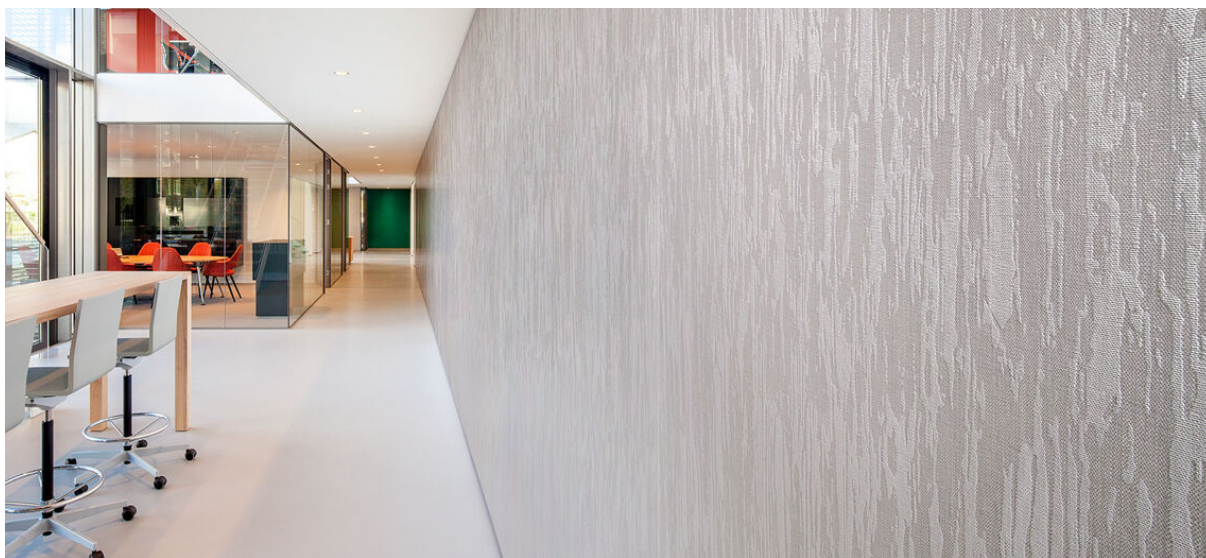


vener emboss

2535.01 - 2535.08



colección
wallcovering
textile
xorel

descripción
tejido con dibujo de corteza

composición
**100% xorel (polietileno) (85% biobased PE,
15% PE)**

ancho
± 132 cm, ± 52 inches

peso
± 340 gr/m², ± 14 oz/yd¹

patrón repetición
altura: 61 cm, 24 inches
ancho: 68.5 cm, 27 inches

combustión retardada
EN 13501, B s1 d2
ASTM E84, A

permeabilidad al vapor de agua
ISO 15106-3 / EN ISO 12572
Sd value <0,5 m

información adicional
cradle to cradle gold certified

**Xorel is a registered trademark and license
to distribute is granted by permission of
Carnegie Fabrics Inc. US**

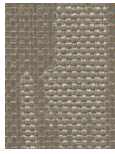


veneer emboss

2535.01 - 2535.08



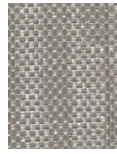
2535.07



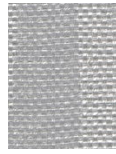
2535.08



2535.01



2535.02



2535.05



2535.03