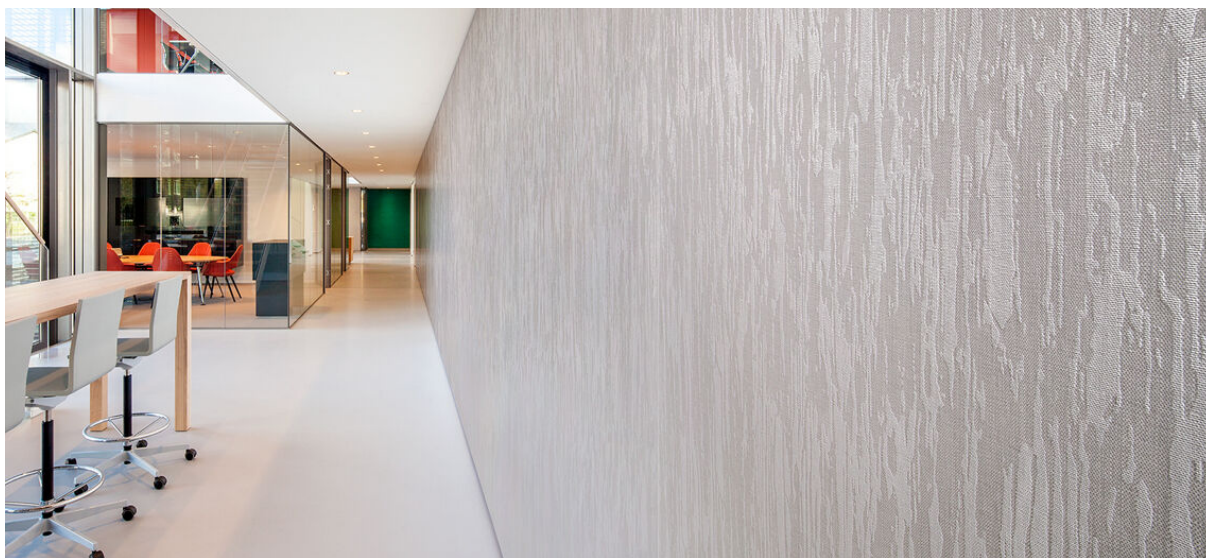


veneer emboss

2535.01 - 2535.08



collection
wallcovering
textile
xorel

description
tissu avec motif d'écorce

composition
**100% xorel (polyéthylène) (85% biobased
PE, 15% PE)**

largeur
± 132 cm, ± 52 inches

poids
± 340 gr/m², ± 14 oz/yd¹

raccord
hauteur : 61 cm, 24 inches
largeur : 68.5 cm, 27 inches

non feu
EN 13501, B s1 d2
ASTM E84, A

perméabilité à la vapeur d'eau
ISO 15106-3 / EN ISO 12572
Sd value <0,5 m

informations complémentaires
cradle to cradle gold certified

**Xorel is a registered trademark and license
to distribute is granted by permission of
Carnegie Fabrics Inc. US**

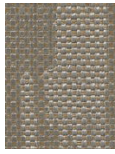


veneer emboss

2535.01 - 2535.08



2535.07



2535.08



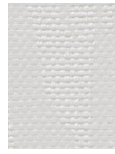
2535.01



2535.02



2535.05



2535.03