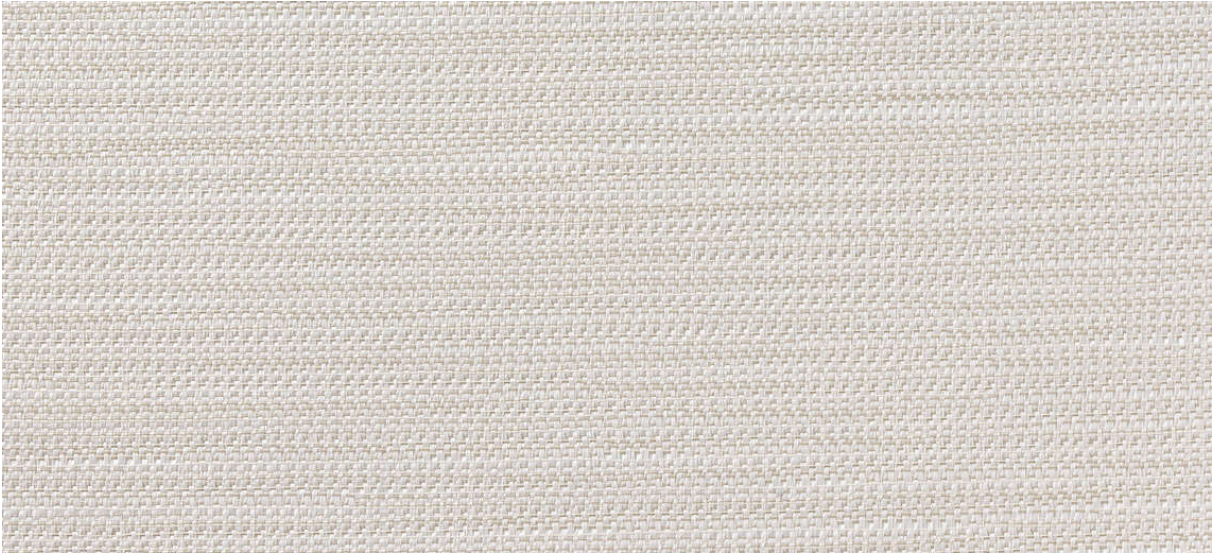


flux

2539.01 - 2539.11



Kollektion
**wallcovering
textile
xorel**



Beschreibung
Semi-uni Gewebe mit leichtem Breite-Effekt



Zusammensetzung
100% ifr xorel (Polyethylen)

Breite
± 132 cm, ± 52 inches



Gewicht
± 280 gr/m², ± 12 oz/yd¹



Brandschutzklasse
**EN 13501, B s1 d0
ASTM E84, A**

Wasserdampfdurchlässigkeit
ISO 15106-3 / EN ISO 12572
Sd Wert <0,5 m

Weitere Informationen
cradle to cradle gold certified

**Xorel is a registered trademark and license
to distribute is granted by permission of
Carnegie Fabrics Inc. US**

flux

2539.01 - 2539.11



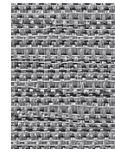
2539.01



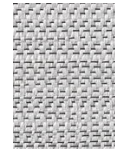
2539.05



2539.07



2539.06



2539.09



2539.11



2539.10



2539.08



2539.02



2539.04