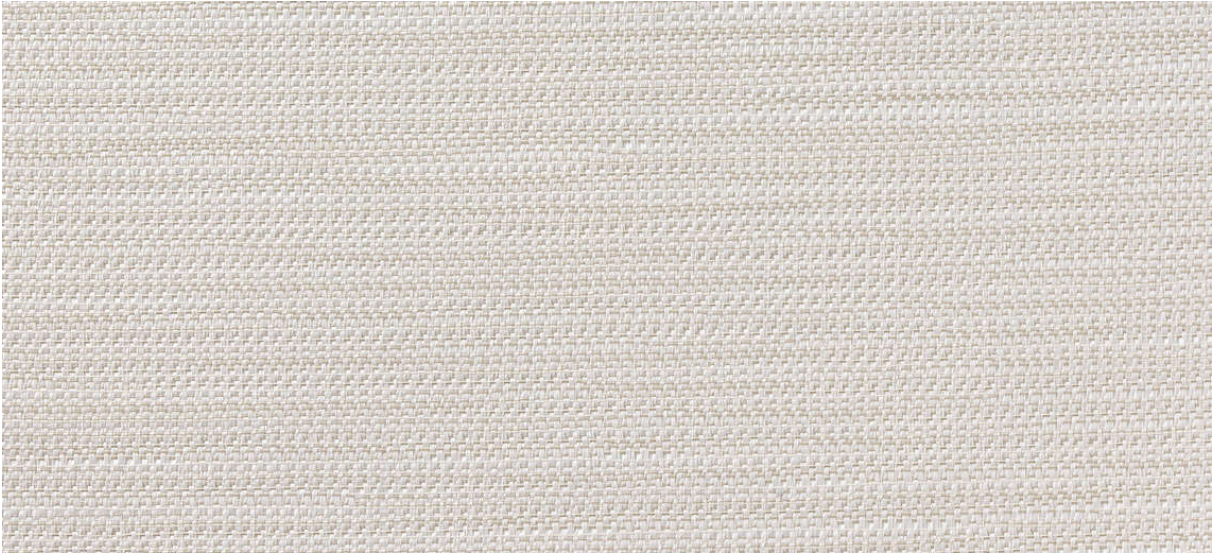


flux

2539.01 - 2539.11



collection

**wallcovering
textile
xorel**



description

semi-uni fabric with faint width effect



composition

100% ifr xorel (polyethylene)



width

± 132 cm, ± 52 inches

weight

± 280 gr/m², ± 12 oz/yd¹



flame retardancy

EN 13501, B s1 d0

ASTM E84, A

water vapor permeability

ISO 15106-3 / EN ISO 12572

Sd value <0,5 m

additional information

cradle to cradle gold certified

Xorel is a registered trademark and license to distribute is granted by permission of Carnegie Fabrics Inc. US

flux

2539.01 - 2539.11



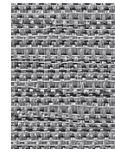
2539.01



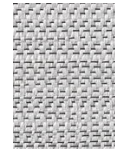
2539.05



2539.07



2539.06



2539.09



2539.11



2539.10



2539.08



2539.02



2539.04