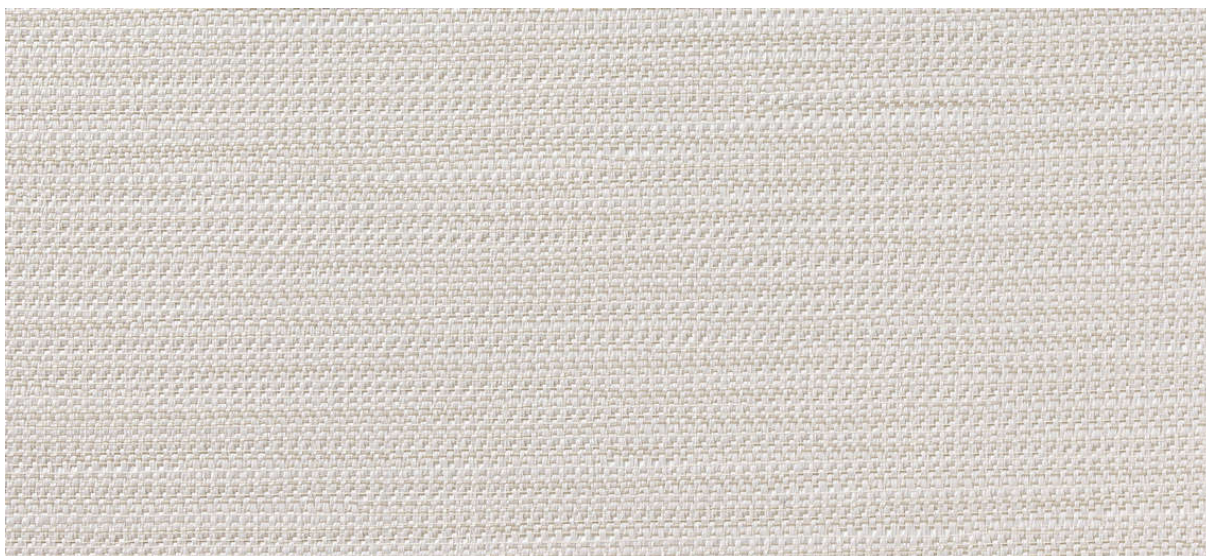


flux

2539.01 - 2539.11



colección
wallcovering
textile
xorel

descripción
tejido semiliso con cierto efecto de ancho

composición
100% ifr xorel (polietileno)

ancho
± 132 cm, ± 52 inches

peso
± 280 gr/m², ± 12 oz/yd¹

combustión retardada
EN 13501, B s1 d0
ASTM E84, A

permeabilidad al vapor de agua
ISO 15106-3 / EN ISO 12572
Sd value <0,5 m

información adicional
cradle to cradle gold certified

Xorel is a registered trademark and license to distribute is granted by permission of Carnegie Fabrics Inc. US



flux

2539.01 - 2539.11



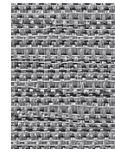
2539.01



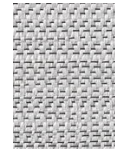
2539.05



2539.07



2539.06



2539.09



2539.11



2539.10



2539.08



2539.02



2539.04