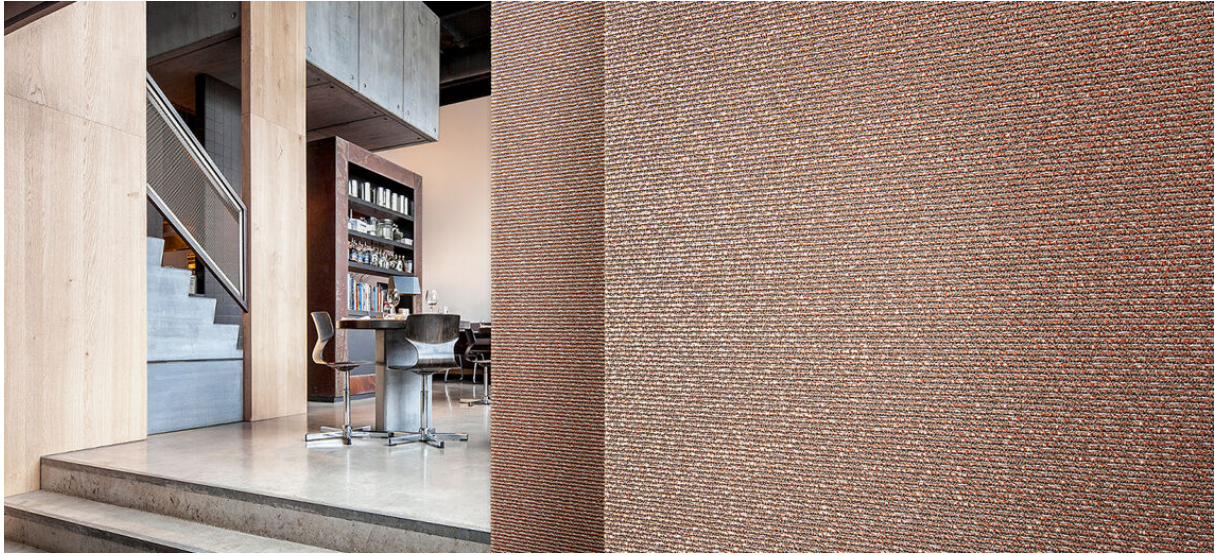


tangle

2538.02 - 2538.11



collection
wallcovering
textile
xorel

description
tissu avec structure grossière

composition
100% xorel (polyéthylène) (58% PE, 42% biobased PE)

largeur
± 132 cm, ± 52 inches

poids
± 340 gr/m², ± 14 oz/yd¹

non feu
EN 13501, B s1 d2
ASTM E84, A

perméabilité à la vapeur d'eau
ISO 15106-3 / EN ISO 12572
Sd value <0,5 m

informations complémentaires
cradle to cradle gold certified

Xorel is a registered trademark and license to distribute is granted by permission of Carnegie Fabrics Inc. US



tangle

2538.02 - 2538.11



2538.02



2538.05



2538.06



2538.10



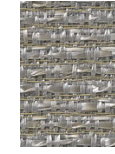
2538.07



2538.11



2538.04



2538.03