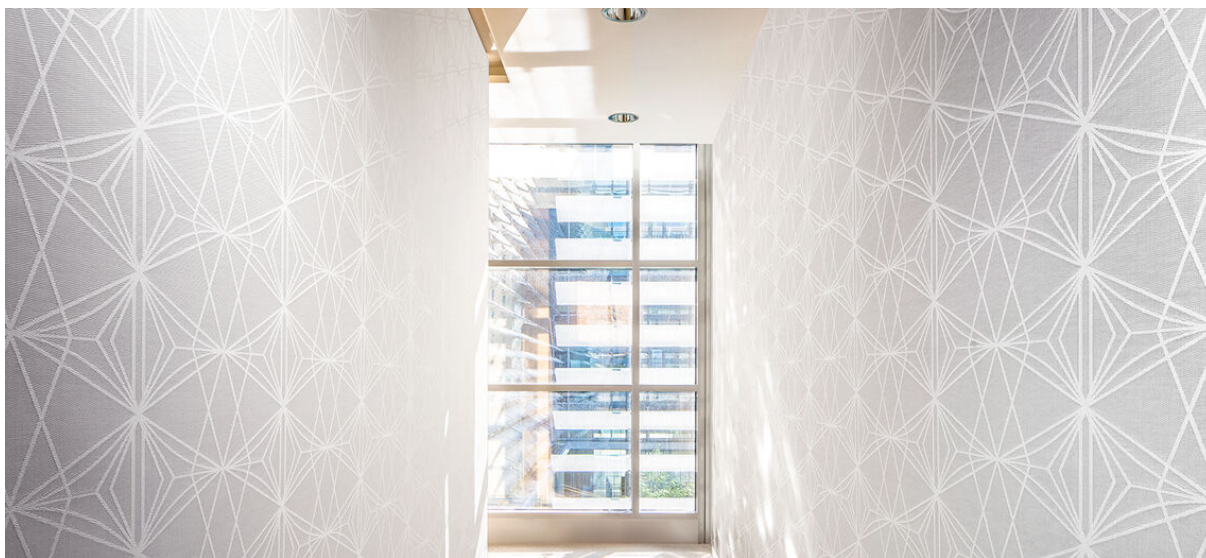


# kaleidoscope

2542.01 - 2542.08



collection

**wallcovering**  
**textile**  
**xorel**

description

**large graphic motif depicted in bold lines**

composition

**100% ifr xorel® (polyethylene) on x-protect wall™ (paper backing)**

width

**± 132 cm, ± 52 inches**

weight

**± 376 gr/m<sup>2</sup>, ± 16 oz/yd<sup>1</sup>**

pattern repeat

**height: 36.2 cm, 14.2 inches**

**width: 33.7 cm, 13.2 inches**

flame retardancy

**EN 13501, B s1 d0**

**ASTM E84, A**

water vapor permeability

**ISO 15106-3 / EN ISO 12572**

Sd value <0,5 m

additional information

**cradle to cradle gold certified**

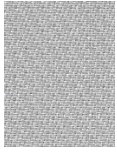
**Xorel is a registered trademark and license to distribute is granted by permission of Carnegie Fabrics Inc. US**



# kaleidoscope

2542.01 - 2542.08

---



2542.02



2542.03



2542.01



2542.04



2542.05



2542.07



2542.08



2542.06