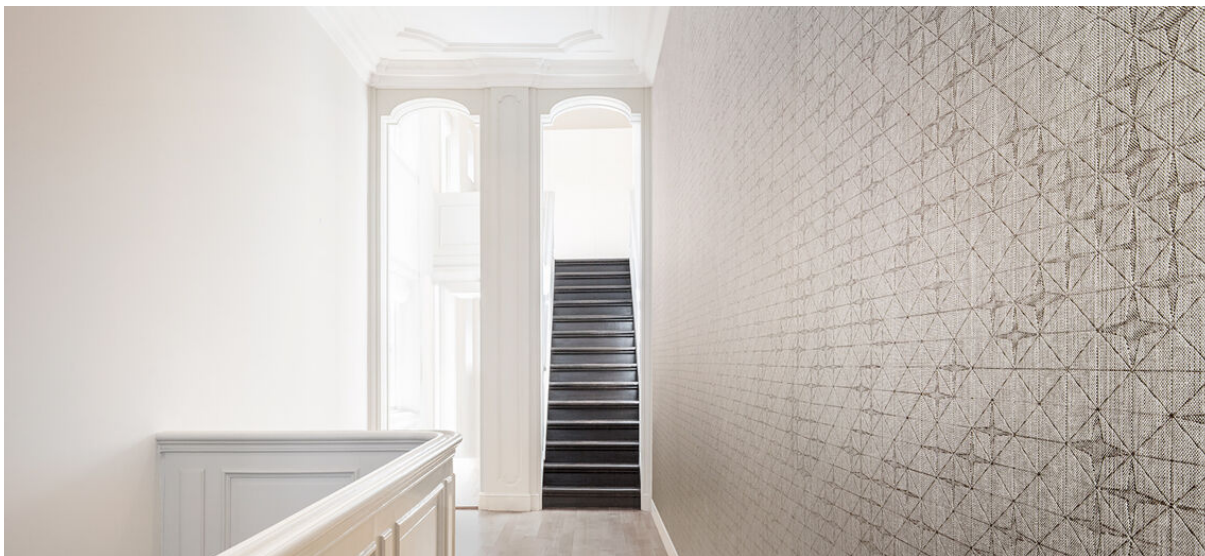


# fragment emboss

2541.01 - 2541.09



collectie

wallcovering  
textile  
xorel

omschrijving

sterrenmotief geplaatst op een raster

samenstelling

100% xorel® (polyethyleen) (85% biobased polyethyleen, 15% polyethyleen) on x-protect wall™ (paper backing)

breedte

± 132 cm, ± 52 inches

gewicht

± 376 gr/m<sup>2</sup>, ± 16 oz/yd<sup>1</sup>

rapport

hoogte: 64.8 cm, 25.5 inches

breedte: 65.4 cm, 25.7 inches

brandwerendheid

EN 13501, B s1 d2

ASTM E84, A

waterdampdoorlaatbaarheid

ISO 15106-3 / EN ISO 12572

Sd waarde <0,5 m

aanvullende informatie

cradle to cradle gold certified

Xorel is a registered trademark and license to distribute is granted by permission of Carnegie Fabrics Inc. US



# fragment emboss

2541.01 - 2541.09

---



2541.01



2541.03



2541.02



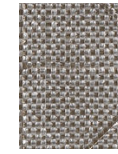
2541.04



2541.05



2541.06



2541.08



2541.09