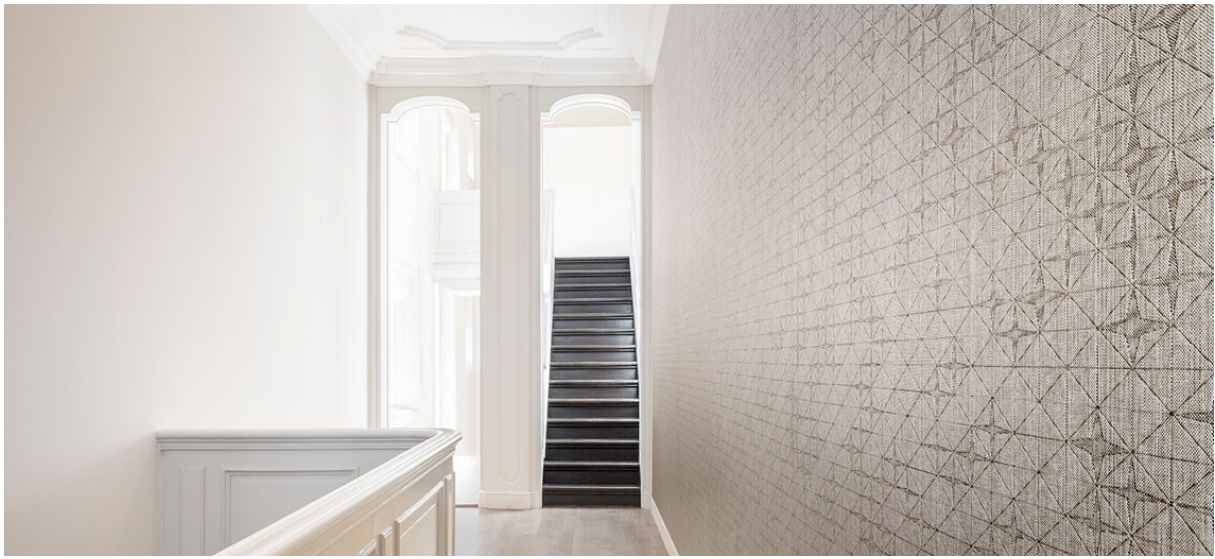


# fragment emboss

2541.01 - 2541.09



## 系列

wallcovering  
textile  
xorel

## 描述

用星型纹理组成的格状图案

## 组成

100% Xorel (聚乙烯)  
(85%为生物基聚乙烯, 15%聚乙烯) 在纸底上带有X-I

## 宽度

± 132 cm, ± 52 inches

## 重量

± 376 gr/m<sup>2</sup>, ± 16 oz/yd<sup>1</sup>

## 花色重复

高度: 64.8 cm, 25.5 inches  
宽度: 65.4 cm, 25.7 inches

## 阻燃

EN 13501, B s1 d2  
ASTM E84, A

## 水蒸气渗透性

ISO 15106-3 / EN ISO 12572  
Sd value <0,5 m

## 额外信息

cradle to cradle gold certified



Xorel is a registered trademark and license to distribute is granted by permission of Carnegie Fabrics Inc. US

# fragment emboss

2541.01 - 2541.09

---



2541.01



2541.03



2541.02



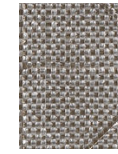
2541.04



2541.05



2541.06



2541.08



2541.09